

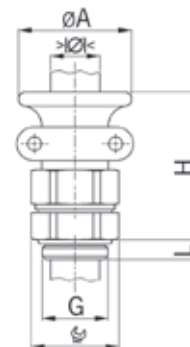
# AGRO Ex 黄铜镀镍电缆接头，适用于防爆外壳 Ex d IIC

## AGRO Ex cable glands nickel-plated brass for flameproof enclosure Ex d IIC

公制螺纹 | Entry thread metric

材质: 黄铜镀镍  
 螺钉: 不锈钢A2  
 密封件: NBR  
 O型圈: FPM  
 温度范围: -40°C / +100°C  
 防护等级: IP68 (30 bar)  
 测试标准: IEC EN 60079-0 / IEC EN 60079-1 / IEC EN 60079-31  
 目录2G: II 2G Ex db eb IIC  
 目录2D: II 2D Ex ta IIIC  
 区域: 气体 1 和 2 / 粉尘 21 和 22  
 认证: PTB 00 ATEX 1059  
 IECEx 认证: IECEx PTB 12.0056

Material: Nickel-plated brass  
 Screws: Stainless steel A2  
 Seal: NBR  
 O-ring: FPM  
 Temperature range: -40°C / +100°C  
 Protection class: IP 68 (30 bar)  
 Test standard: IEC EN 60079-0 / IEC EN 60079-1 / IEC EN 60079-31  
 Gas: II 2G Ex db eb IIC  
 Dust: II 2D Ex ta IIIC  
 Zone: Gas 1 and 2 / dust 21 and 22  
 Certificate: PTB 00 ATEX 1059  
 IECEx Certificate: IECEx PTB 12.0056



### Serie 18



单体密封件  
 非整体长度绝缘

One-piece sealing insert  
 not overall length insulated

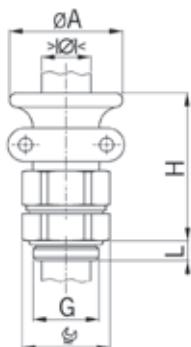
G	> Ø < min mm	> Ø < max mm	mm	ØA mm	H mm	L mm	型号   Art. No.	
M16x1.5	7.0	9.0	20	27	57	12	1817.09.26	25
M20x1.5	9.0	11.0	24	30	57	12	1820.11.26	25
M20x1.5	11.0	13.0	26	32	57	14	1820.16.26	25
M25x1.5	13.0	16.5	32	40	67	16	1825.21.26	10
M25x1.5	16.5	20.0	36	44	67	16	1825.21.27	10
M32x1.5	20.0	24.0	46	48	78	17	1832.29.26	5
M40x1.5	24.0	28.0	46	52	78	17	1840.29.27	5
M50x1.5	28.0	32.0	55	60	85	17	1850.36.26	5
M50x1.5	32.0	36.0	55	64	85	17	1850.36.27	5
M63x1.5	36.0	40.0	70	75	88	20	1863.48.26	1
M63x1.5	40.0	44.0	70	80	88	20	1863.48.27	1



# AGRO Ex 黄铜镀镍电缆接头，适用于防爆外壳 Ex d IIC

## AGRO Ex cable glands nickel-plated brass for flameproof enclosure Ex d IIC

### Pg 螺纹 | Entry thread Pg



材质: 黄铜镀镍  
 螺钉: 不锈钢A2  
 密封件: NBR  
 O型圈: FPM  
 温度范围: -40°C / +100°C  
 防护等级: IP68 (30 bar)  
 测试标准: IEC EN 60079-0 / IEC EN 60079-1 / IEC EN 60079-31  
 目录2G: II 2G Ex db eb IIC  
 目录2D: II 2D Ex ta IIIC  
 区域: 气体 1 和 2 / 粉尘 21 和 22  
 认证: PTB 00 ATEX 1059  
 IECEx 认证: IECEx PTB 12.0056

Material: Nickel-plated brass  
 Screws: Stainless steel A2  
 Seal: NBR  
 O-ring: FPM  
 Temperature range: -40°C / +100°C  
 Protection class: IP 68 (30 bar)  
 Test standard: IEC EN 60079-0 / IEC EN 60079-1 / IEC EN 60079-31  
 Gas: II 2G Ex db eb IIC  
 Dust: II 2D Ex ta IIIC  
 Zone: Gas 1 and 2 / dust 21 and 22  
 Certificate: PTB 00 ATEX 1059  
 IECEx Certificate: IECEx PTB 12.0056

#### Serie 18



单体密封件  
 非整体长度绝缘

One-piece sealing insert  
 not overall length insulated

G	>Ø< min mm	>Ø< max mm	mm	ØA mm	H mm	L mm	型号   Art. No.	
Pg 9	7.0	9.0	20	27	57	12	1809.26	25
Pg 11	9.0	11.0	24	30	57	12	1811.26	25
Pg 13	11.0	13.0	26	32	57	14	1813.26	25
Pg 16	11.0	13.0	26	32	57	14	1816.26	25
Pg 21	13.0	16.5	32	40	67	16	1821.26	10
Pg 21	16.5	20.0	36	44	67	16	1821.27	10
Pg 29	20.0	24.0	45	48	78	17	1829.26	5
Pg 29	24.0	28.0	45	52	78	17	1829.27	5
Pg 36	28.0	32.0	55	60	85	17	1836.26	5
Pg 36	32.0	36.0	55	64	85	17	1836.27	5
Pg 48	36.0	40.0	64	75	88	20	1848.48.26	1
Pg 48	40.0	44.0	64	80	88	20	1848.48.27	1

### 气管螺纹 | Gas-pipe entry thread

#### Serie 18



单体密封件  
 非整体长度绝缘

One-piece sealing insert  
 not overall length insulated

G	>Ø< min mm	>Ø< max mm	mm	ØA mm	H mm	L mm	型号   Art. No.	
G 3/8"	7.0	9.0	20	27	57	12	183/8G.09.26	25
G 1/2"	9.0	11.0	24	30	57	14	181/2G.11.26	25
G 1/2"	11.0	13.0	26	32	57	14	181/2G.16.26	25
G 3/4"	13.0	16.5	32	40	67	16	183/4G.21.26	10
G 3/4"	16.5	20.0	36	44	67	16	183/4G.21.27	10
G 1"	20.0	24.0	45	48	78	17	181G.29.26	5
G 1 1/4"	24.0	28.0	45	52	78	17	1811/4G.29.27	5
G 1 1/2"	28.0	32.0	55	60	85	17	1811/2G.36.26	5
G 2"	36.0	40.0	64	75	88	20	1848.26	1
G 2"	40.0	44.0	64	80	88	20	1848.27	1

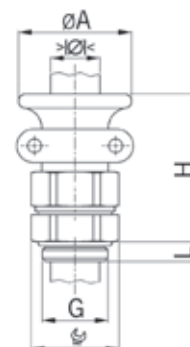
# AGRO Ex 黄铜镀镍电缆接头，适用于防爆外壳 Ex d IIC

## AGRO Ex cable glands nickel-plated brass for flameproof enclosure Ex d IIC

NPT螺纹 | Entry thread NPT

材质: 黄铜镀镍  
 螺钉: 不锈钢A2  
 密封件: NBR  
 O型圈: FPM  
 温度范围: -40°C / +100°C  
 防护等级: 如螺纹带密封圈, 防护等级可达 IP68  
 测试标准: IEC EN 60079-0 / IEC EN 60079-1 / IEC EN 60079-31  
 目录2G: II 2G Ex db eb IIC  
 目录2D: II 2D Ex ta IIIC  
 区域: 气体 1 和 2 / 粉尘 21 和 22  
 认证: PTB 00 ATEX 1059  
 IECEx 认证: IECEx PTB 12.0056

Material: Nickel-plated brass  
 Screws: Stainless steel A2  
 Seal: NBR  
 O-ring: FPM  
 Temperature range: -40°C / +100°C  
 Protection class: IP 68, if the entry thread is sealed  
 Test standard: IEC EN 60079-0 / IEC EN 60079-1 / IEC EN 60079-31  
 Gas: II 2G Ex db eb IIC  
 Dust: II 2D Ex ta IIIC  
 Zone: Gas 1 and 2 / dust 21 and 22  
 Certificate: PTB 00 ATEX 1059  
 IECEx Certificate: IECEx PTB 12.0056



### Serie 18



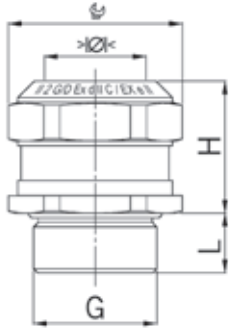
单体密封件  
 非整体长度绝缘

One-piece sealing insert  
 not overall length insulated

G	> Ø < min mm	> Ø < max mm	mm	ØA mm	H mm	L mm	型号   Art. No.	
NPT 3/8"	7.0	9.0	20	27	57	15.5	183/8NPT.09.26	25
NPT 1/2"	9.0	11.0	24	30	57	20	181/2NPT.11.26	25
NPT 1/2"	11.0	13.0	26	32	57	20	181/2NPT.16.26	25
NPT 3/4"	9.0	11.0	27	30	57	20	183/4NPT.11.26	25
NPT 3/4"	11.0	13.0	26	32	57	20	183/4NPT.16.26	25
NPT 3/4"	13.0	16.5	32	40	67	20	183/4NPT.21.26	10
NPT 1"	13.0	16.5	32/34	40	67	25	181NPT.21.26	10
NPT 1"	16.5	20.0	36	44	67	25	181NPT.21.27	10
NPT 1 1/4"	20.0	24.0	45	48	78	26	1811/4NPT.29.26	5
NPT 1 1/4"	24.0	28.0	45	52	78	26	1811/4NPT.29.27	5
NPT 1 1/2"	28.0	32.0	55	60	85	26	1811/2NPT.36.26	5
NPT 1 1/2"	32.0	36.0	55	64	85	26	1811/2NPT.36.27	5



公制螺纹 | Entry thread metric



材质: 黄铜镀镍  
 密封件: NBR  
 O型圈: FPM  
 温度范围: -60°C / +105°C  
 防护等级: IP68 (30 bar)  
 测试标准: IEC EN 60079-0 / IEC EN 60079-1 / IEC EN 60079-7 / IEC EN 60079-31  
 目录2G: II 2G Ex db eb IIC  
 目录2D: II 2D Ex ta IIIC  
 区域: 气体 1 和 2 / 粉尘 21 和 22  
 认证: PTB 10 ATEX 1034X  
 IECEx 认证: IECEx PTB 12.0055X

Material: Nickel-plated brass  
 Seal: NBR  
 O-ring: FPM  
 Temperature range: -60°C / +105°C  
 Protection class: IP 68 (30 bar)  
 Test standard: IEC EN 60079-0 / IEC EN 60079-1 / IEC EN 60079-7 / IEC EN 60079-31  
 Gas: II 2G Ex db eb IIC  
 Dust: II 2D Ex ta IIIC  
 Zone: Gas 1 and 2 / dust 21 and 22  
 Certificate: PTB 10 ATEX 1034X  
 IECEx Certificate: IECEx PTB 12.0055X



EX Compact MS



单体密封件  
 非整体长度绝缘

One-piece sealing insert  
 not overall length insulated

G	> Ø < min mm	> Ø < max mm	Ø mm	H mm	L mm	型号   Art. No.	📦
M16x1.5	3.0	7.0	21	26	12	EX1126.17.070	25
M16x1.5	5.0	10.0	24	26	12	EX1126.17.100	25
M20x1.5	5.0	11.0	24	26	12	EX1126.20.110	25
M20x1.5	9.0	14.0	30	26	12	EX1126.20.140	25
M25x1.5	7.5	15.0	32	28	12	EX1126.25.150	20
M25x1.5	12.5	18.0	32	28	12	EX1126.25.180	20
M32x1.5	17.0	23.0	41	33	12	EX1126.32.230	10
M32x1.5	21.0	26.0	41	33	12	EX1126.32.260	10
M40x1.5	21.0	26.0	41	33	14	EX1126.40.260	10
M40x1.5	24.0	32.0	50	34	14	EX1126.40.320	10
M50x1.5	28.0	36.0	55	34	14	EX1126.50.360	5
M50x1.5	35.0	42.0	60	35	14	EX1126.50.420	5
M63x1.5	36.0	44.0	65	35	14	EX1126.63.440	1
M63x1.5	43.0	50.0	70	35	14	EX1126.63.500	1

可根据要求提供  
 不锈钢A2, A4

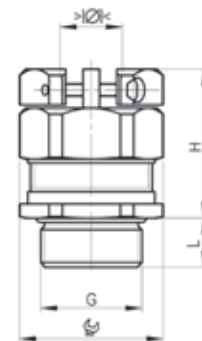
Available on request:  
 Executions in steel A2 and A4

**AGRO 黄铜镀镍带卡箍Ex紧凑型电缆接头，防爆外壳Ex d IIC和增安型Ex e II**

**AGRO cable glands Ex Compact nickel-plated brass with clamps Ex d IIC and Ex e II**

材质: 黄铜镀镍  
 密封件: NBR  
 O型圈: FPM  
 温度范围: -60°C / +105°C  
 防护等级: IP68 (30 bar)  
 测试标准: IEC EN 60079-0 / IEC EN 60079-1 / IEC EN 60079-7 / IEC EN 60079-31  
 目录2G: II 2G Ex db eb IIC Gb  
 目录2D: II 2D Ex tb IIIC Db  
 区域: 气体 1 和 2 / 粉尘 21 和 22  
 认证: SEV 17 ATEX 0153  
 IECEx 认证: IECEx SEV 17.0017

Material: Nickel-plated brass  
 Seal: NBR  
 O-ring: FPM  
 Temperature range: -60°C / +105°C  
 Protection class: IP 68 (30 bar)  
 Test standard: IEC EN 60079-0 / IEC EN 60079-1 / IEC EN 60079-7 / IEC EN 60079-31  
 Gas: II 2G Ex db eb IIC Gb  
 Dust: II 2D Ex tb IIIC Db  
 Zone: Gas 1 and 2 / dust 21 and 22  
 Certificate: SEV 17 ATEX 0153  
 IECEx Certificate: IECEx SEV 17.0017



**EX Compact MS KB**



单体密封件 非整体长度绝缘						One-piece sealing insert not overall length insulated	
G	> Ø < min mm	> Ø < max mm	mm	H mm	L mm	型号   Art. No.	
M16x1.5	3.0	7.0	21	34	12	EX1826.17.070	25
M16x1.5	5.0	10.0	24	35	12	EX1826.17.100	25
M20x1.5	5.0	11.0	24	35	12	EX1826.20.110	25
M20x1.5	9.0	14.0	30	35	12	EX1826.20.140	25
M25x1.5	7.5	15.0	32	37	12	EX1826.25.150	20
M25x1.5	12.5	18.0	32	37	12	EX1826.25.180	20
M32x1.5	17.0	23.0	41	42	12	EX1826.32.230	10
M32x1.5	21.0	26.0	41	42	12	EX1826.32.260	10
M40x1.5	21.0	26.0	41	42	14	EX1826.40.260	10
M40x1.5	24.0	32.0	50	47	14	EX1826.40.320	10
M50x1.5	28.0	36.0	55	48	14	EX1826.50.360	5
M50x1.5	35.0	42.0	60	50	14	EX1826.50.420	5
M63x1.5	36.0	44.0	65	51	14	EX1826.63.440	1
M63x1.5	43.0	50.0	70	51	14	EX1826.63.500	1

可根据要求提供  
Pg螺纹，NPT螺纹  
不锈钢A2或A4

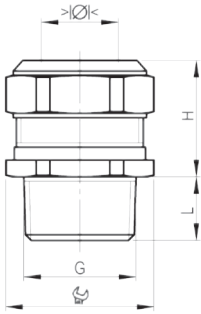
Available on request:  
Entry thread Pg and NPT  
Stainless steel A2 or A4



# AGRO Ex 黄铜镀镍紧凑型电缆接头，适用于防爆外壳 Ex d IIC 和增安型 Ex e II

AGRO cable glands Ex Compact nickel-plated brass flameproof enclosure Ex d IIC and increased safety Ex e II

## NPT螺纹 | Entry thread NPT



材质: 黄铜镀镍  
 密封件: NBR  
 温度范围: -60°C / +105°C  
 防护等级: IP68 (30 bar)  
 测试标准: IEC EN 60079-0 / IEC EN 60079-1 / IEC EN 60079-7 / IEC EN 60079-31  
 目录2G: II 2G Ex db eb IIC  
 目录2D: II 2D Ex ta IIIC  
 区域: 气体 1 和 2 / 粉尘 21 和 22  
 认证: PTB 10 ATEX 1034X  
 IECEx 认证: IECEx PTB 12.0055X

Material: Nickel-plated brass  
 Seal: NBR  
 Temperature range: -60°C / +105°C  
 Protection class: IP 68 (30 bar)  
 Test standard: IEC EN 60079-0 / IEC EN 60079-1 / IEC EN 60079-7 / IEC EN 60079-31  
 Gas: II 2G Ex db eb IIC  
 Dust: II 2D Ex ta IIIC  
 Zone: Gas 1 and 2 / dust 21 and 22  
 Certificate: PTB 10 ATEX 1034X  
 IECEx Certificate: IECEx PTB 12.0055X

### EX Compact MS



单体密封件  
 非整体长度绝缘

One-piece sealing insert  
 not overall length insulated

G	> Ø < min mm	> Ø < max mm	mm	H mm	L mm	型号   Art. No.	
NPT 3/8"	3.0	7.0	21	26	15	EX1126.3/8NPT.070	25
NPT 3/8"	5.0	10.0	24	26	15	EX1126.3/8NPT.100	25
NPT 1/2"	5.0	11.0	24	26	15	EX1126.1/2NPT.110	25
NPT 1/2"	9.0	14.0	30	26	15	EX1126.1/2NPT.140	25
NPT 3/4"	7.5	15.0	32	28	15	EX1126.3/4NPT.150	20
NPT 3/4"	12.5	18.0	32	28	15	EX1126.3/4NPT.180	20
NPT 1"	17.0	23.0	41	33	20	EX1126.1NPT.230	10
NPT 1"	21.0	26.0	41	33	20	EX1126.1NPT.260	10
NPT 1 1/4"	24.0	32.0	50	34	20	EX1126.11/4NPT.320	10
NPT 1 1/2"	28.0	36.0	55	34	20	EX1126.11/2NPT.360	5
NPT 2"	36.0	44.0	65	35	22	EX1126.2NPT.440	5

可根据要求提供  
 不锈钢A2, A4

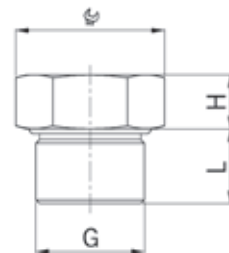
Available on request:  
 Executions in steel A2 and A4

黄铜镀镍锁紧堵头，适用于防爆外壳 Ex d IIC

Locking plugs nickel-plated brass  
flameproof enclosure Ex d IIC

材质:	黄铜镀镍
O型圈:	FPM
温度范围:	-40°C / +100°C
防护等级:	IP68 (30 bar)
测试标准:	IEC EN 60079-0 IEC EN 60079-1 IEC EN 60079-31
目录2G:	II 2G Ex db eb IIC
目录2D:	II 2D Ex ta IIIC
区域:	气体 1 和 2 / 粉尘 21 和 22
认证:	PTB 00 ATEX 1059
IECEx 认证:	IECEx PTB 12.0056

Material:	Nickel-plated brass
O-ring:	FPM
Temperature range:	-40°C / +100°C
Protection class:	IP 68 (30 bar)
Test standard:	IEC EN 60079-0 IEC EN 60079-1 IEC EN 60079-31
Gas:	II 2G Ex db eb IIC
Dust:	II 2D Ex ta IIIC
Zone:	Gas 1 and 2 / dust 21 and 22
Certificate:	PTB 00 ATEX 1059
IECEx Certificate:	IECEx PTB 12.0056



带O型圈				with O-ring	型号   Art. No.	
G		H	L			
	mm	mm	mm			
M12x1.5	15	5	15	8710.12	10	
M16x1.5	18	6	15	8710.17	10	
M20x1.5	24	8	15	8710.20	10	
M25x1.5	30	10	15	8710.25	10	
M32x1.5	36	12	15	8710.32	10	
M40x1.5	46	12	15	8710.40	10	
M50x1.5	55	12	15	8710.50	10	
M63x1.5	70	12	15	8710.63	10	

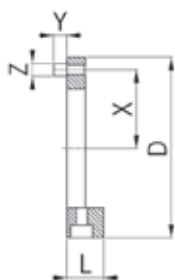


带O型圈				with O-ring	型号   Art. No.	
G		H	L			
	mm	mm	mm			
Pg 7	16	6.4	10.5	8710.07	10	
Pg 9	18	7.5	12	8710.09	10	
Pg 11	21	8.8	12	8710.11	10	
Pg 13	24	10.0	14	8710.13	10	
Pg 16	27	11.5	14	8710.16	10	
Pg 21	32	14.0	16	8710.21	10	
Pg 29	41	17.0	17	8710.29	10	
Pg 36	55	22.5	17	8710.36	10	



# 黄铜镀镍电缆接头附件，用于防爆外壳 Ex d IIC

## Accessories for cable glands nickel-plated brass for flameproof enclosure Ex d IIC



### 电缆接头锁紧环，适用于防爆外壳 Ex d IIC

材质：黄铜镀镍  
 螺钉：不锈钢A2  
 温度范围：-60°C / +200°C  
 应用：针对震动导致自然开启的  
 额外安全保护

### Locking rings suitable for cable glands for flameproof enclosure Ex d IIC

Material: Nickel-plated brass  
 Screws: Stainless steel A2  
 Temperature range: -60°C / +200°C  
 Application: Additional safety against self-opening due to vibrations



锁紧环的尺寸必须与Ex d IIC电缆接头的扳手尺寸相匹配 The dimension of the locking ring has to match the wrench size of the Ex d IIC cable gland

 mm	D mm	L mm	X mm	Y mm	ØZ mm	型号   Art. No.	
20	40	13	15	5	5	<b>1809.26.50</b>	50
24	47	13	18	5	5	<b>1811.26.50</b>	50
26	50	13	20	5	5	<b>1816.26.50</b>	50
32	56	13	23	5	5	<b>1821.26.50</b>	50
36	60	13	25	5	5	<b>1821.27.50</b>	50
45	69	14	30	5	5	<b>1829.26.50</b>	50

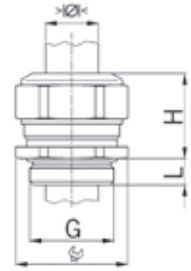


# AGRO Progress® 黄铜镀镍电缆接头，增安型 Ex e II

## AGRO cable glands Progress® nickel-plated brass increased safety Ex e II

公制短螺纹 | Short entry thread metric

材质:	黄铜镀镍	Material:	Nickel-plated brass
密封件:	TPE	Seal:	TPE
O型圈:	FPM	O-ring:	FPM
温度范围:	-60°C / +100°C	Temperature range:	-60°C / +100°C
防护等级:	IP66 / IP68 (不超过10 bar)	Protection class:	IP 66 / IP 68 (up to 10 bar)
测试标准:	IEC EN 60079-0 / IEC EN 60079-7 / IEC EN 60079-31	Test standard:	IEC EN 60079-0 / IEC EN 60079-7 / IEC EN 60079-31
目录2G:	II 2G Ex eb IIC Gb	Gas:	II 2G Ex eb IIC Gb
目录2D:	II 2D Ex tb IIIC Db	Dust:	II 2D Ex tb IIIC Db
区域:	气体 1 和 2 / 粉尘 21 和 22	Zone:	Gas 1 and 2 / dust 21 and 22
认证:	SEV 15 ATEX 0152X	Certificate:	SEV 15 ATEX 0152X
IECEx 认证:	IECEx SEV 15.0019X	IECEx Certificate:	IECEx SEV 15.0019X



### Progress MS EX



单体密封件 非整体长度绝缘							One-piece sealing insert not overall length insulated	
G	> Ø < min mm	> Ø < max mm	mm	H mm	L mm	i info	型号   Art. No.	
M8x1.25	3.0	3.5	11	14	5	1	EX1000.08.035	50
M8x1.25	4.0	5.0	11	14	5	1	EX1000.08.050	50
M10x1.5	3.0	4.0	13	15	5	1	EX1000.10.040	50
M10x1.5	4.5	6.0	13	15	5	1	EX1000.10.060	50
M12x1.5	5.0	6.5	15	17	5	-	EX1000.12.065	50
M12x1.5	6.5	8.0	15	17	5	-	EX1000.12.080	50
M16x1.5	4.5	6.0	18	20	5	-	EX1000.17.060	50
M16x1.5	6.0	8.0	18	20	5	-	EX1000.17.080	50
M20x1.5	6.0	8.0	24	21	6	-	EX1000.20.080	50
M20x1.5	8.0	11.0	24	21	6	-	EX1000.20.110	50
M25x1.5	9.5	12.5	30	25	7	-	EX1000.25.125	25
M25x1.5	12.5	16.0	30	27	7	-	EX1000.25.160	25
M32x1.5	14.0	17.0	36	28	8	-	EX1000.32.170	25
M32x1.5	17.0	21.0	36	28	8	-	EX1000.32.210	25
M40x1.5	20.0	24.0	46	31	8	-	EX1000.40.240	10
M40x1.5	24.0	28.5	46	31	8	-	EX1000.40.285	10

1=公制粗螺距螺纹  
可根据要求提供  
不锈钢A2与A4，NPT螺纹

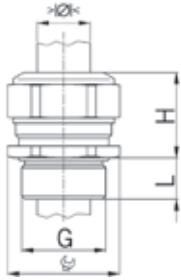
1 = Metric coarse-pitch thread (with VDE test report)  
Available on request:  
Executions in steel A2 and A4, entry thread NPT



# AGRO Progress® 黄铜镀镍电缆接头，增安型 Ex e II

## AGRO cable glands Progress® nickel-plated brass increased safety Ex e II

### 公制长螺纹 | Long entry thread metric



材质: 黄铜镀镍  
 密封件: TPE  
 O型圈: FPM  
 温度范围: -60°C / +100°C  
 防护等级: IP68 (不超过10 bar)  
 测试标准: IEC EN 60079-0 / IEC EN 60079-7 / IEC EN 60079-31  
 目录2G: II 2G Ex eb IIC Gb  
 目录2D: II 2D Ex tb IIIC Db  
 区域: 气体 1 和 2 / 粉尘 21 和 22  
 认证: SEV 15 ATEX 0152X  
 IECEx 认证: IECEx SEV 15.0019X

Material: Nickel-plated brass  
 Seal: TPE  
 O-ring: FPM  
 Temperature range: -60°C / +100°C  
 Protection class: IP 68 (up to 10 bar)  
 Test standard: IEC EN 60079-0 / IEC EN 60079-7 / IEC EN 60079-31  
 Gas: II 2G Ex eb IIC Gb  
 Dust: II 2D Ex tb IIIC Db  
 Zone: Gas 1 and 2 / dust 21 and 22  
 Certificate: SEV 15 ATEX 0152X  
 IECEx Certificate: IECEx SEV 15.0019X

### Progress MS EX



单体密封件  
 非整体长度绝缘

One-piece sealing insert  
 not overall length insulated

G	> Ø <	> Ø <	Ø	H	L	i	型号   Art. No.	包装
	min mm	max mm	mm	mm	mm	info		
M8x1.25	3.0	3.5	11	14	10	1	EX1100.08.035	50
M8x1.25	4.0	5.0	11	14	10	1	EX1100.08.050	50
M10x1.5	3.0	4.0	13	15	10	1	EX1100.10.040	50
M10x1.5	4.5	6.0	13	15	10	1	EX1100.10.060	50
M12x1.5	5.0	6.5	15	17	10	-	EX1100.12.065	50
M12x1.5	6.5	8.0	15	17	10	-	EX1100.12.080	50
M16x1.5	4.5	6.0	18	20	10	-	EX1100.17.060	50
M16x1.5	6.0	8.0	18	20	10	-	EX1100.17.080	50
M20x1.5	6.0	8.0	24	21	10	-	EX1100.20.080	50
M20x1.5	8.0	11.0	24	21	10	-	EX1100.20.110	50
M25x1.5	9.5	12.5	30	25	11	-	EX1100.25.125	25
M25x1.5	12.5	16.0	30	27	11	-	EX1100.25.160	25
M32x1.5	14.0	17.0	36	28	13	-	EX1100.32.170	25
M32x1.5	17.0	21.0	36	28	13	-	EX1100.32.210	25
M40x1.5	20.0	24.0	46	31	13	-	EX1100.40.240	10
M40x1.5	24.0	28.5	46	31	13	-	EX1100.40.285	10

1=公制粗螺距螺纹  
 可根据要求提供  
 不锈钢A2与A4，NPT螺纹

1 = Metric coarse-pitch thread (with VDE test report)  
 Available on request:  
 Executions in steel A2 and A4, entry thread NPT

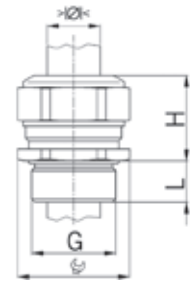
# AGRO Progress® 黄铜镀镍电缆接头，增安型 Ex e II

## AGRO cable glands Progress® nickel-plated brass increased safety Ex e II

Pg短螺纹 | Short entry thread Pg

材质: 黄铜镀镍  
 密封件: TPE  
 O型圈: FPM  
 温度范围: -60°C / +100°C  
 防护等级: IP68 (不超过10 bar)  
 测试标准: IEC EN 60079-0 / IEC EN 60079-7 / IEC EN 60079-31  
 目录2G: II 2G Ex eb IIC Gb  
 目录2D: II 2D Ex tb IIIC Db  
 区域: 气体 1 和 2 / 粉尘 21 和 22  
 认证: SEV 15 ATEX 0152X  
 IECEx 认证: IECEx SEV 15.0019X

Material: Nickel-plated brass  
 Seal: TPE  
 O-ring: FPM  
 Temperature range: -60°C / +100°C  
 Protection class: IP 66 / IP 68 (up to 10 bar)  
 Test standard: IEC EN 60079-0 / IEC EN 60079-7 / IEC EN 60079-31  
 Gas: II 2G Ex eb IIC Gb  
 Dust: II 2D Ex tb IIIC Db  
 Zone: Gas 1 and 2 / dust 21 and 22  
 Certificate: SEV 15 ATEX 0152X  
 IECEx Certificate: IECEx SEV 15.0019X



### Progress MS EX



单体密封件  
 非整体长度绝缘

One-piece sealing insert  
 not overall length insulated

G	>Ø< min mm	>Ø< max mm	mm	H mm	L mm	型号   Art. No.	
Pg 7	5.0	6.5	15	17	6	EX1000.07.065	50
Pg 7	6.5	8.0	15	17	6	EX1000.07.080	50
Pg 9	4.5	6.0	18	20	6	EX1000.09.060	50
Pg 9	6.0	8.0	18	20	6	EX1000.09.080	50
Pg 11	4.0	5.5	21	21	6	EX1000.11.055	50
Pg 11	5.5	8.5	21	21	6	EX1000.11.085	50
Pg 13	6.0	8.0	24	21	6	EX1000.13.080	50
Pg 13	8.0	11.0	24	21	6	EX1000.13.110	50
Pg 16	6.0	8.0	24	21	6	EX1000.16.080	50
Pg 16	8.0	11.0	24	21	6	EX1000.16.110	50
Pg 21	9.5	12.5	30	25	7.5	EX1000.21.125	25
Pg 21	12.5	16.0	30	25	7.5	EX1000.21.160	25
Pg 29	16.0	19.0	38	28	8	EX1000.29.190	25
Pg 29	19.0	23.0	38	28	8	EX1000.29.230	25
Pg 36	21.5	26.0	50	32	8	EX1000.36.260	10
Pg 36	26.0	30.5	50	32	8	EX1000.36.305	10



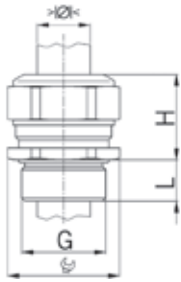
可根据要求提供  
 不锈钢A2与A4，NPT螺纹

Available on request:  
 Executions in steel A2 and A4, entry thread NPT

# AGRO Progress® 黄铜镀镍电缆接头，增安型 Ex e II

## AGRO cable glands Progress® nickel-plated brass increased safety Ex e II

### Pg长螺纹 | Long entry thread Pg



材质:	黄铜镀镍	Material:	Nickel-plated brass
密封件:	TPE	Seal:	TPE
O型圈:	FPM	O-ring:	FPM
温度范围:	-60°C / +100°C	Temperature range:	-60°C / +100°C
防护等级:	IP66 / IP68 (不超过10 bar)	Protection class:	IP 66 / IP 68 (up to 10 bar)
测试标准:	IEC EN 60079-0 / IEC EN 60079-7 / IEC EN 60079-31	Test standard:	IEC EN 60079-0 / IEC EN 60079-7 / IEC EN 60079-31
目录2G:	II 2G Ex eb IIC Gb	Gas:	II 2G Ex eb IIC Gb
目录2D:	II 2D Ex tb IIIC Db	Dust:	II 2D Ex tb IIIC Db
区域:	气体 1 和 2 / 粉尘 21 和 22	Zone:	Gas 1 and 2 / dust 21 and 22
认证:	SEV 15 ATEX 0152X	Certificate:	SEV 15 ATEX 0152X
IECEx 认证:	IECEx SEV 15.0019X	IECEx Certificate:	IECEx SEV 15.0019X



### Progress MS EX

单体密封件  
非整体长度绝缘

One-piece sealing insert  
not overall length insulated

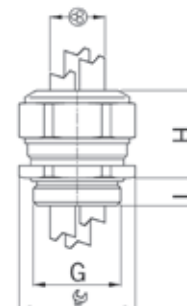
G	>Ø< min mm	>Ø< max mm	Ø mm	H mm	L mm	型号   Art. No.	包装
Pg 7	5.0	6.5	15	17	10	EX1100.07.065	50
Pg 7	6.5	8.0	15	17	10	EX1100.07.080	50
Pg 9	4.5	6.0	18	20	10	EX1100.09.060	50
Pg 9	6.0	8.0	18	20	10	EX1100.09.080	50
Pg 11	4.0	5.5	21	21	10	EX1100.11.055	50
Pg 11	5.5	8.5	21	21	10	EX1100.11.085	50
Pg 13	6.0	8.0	24	21	10	EX1100.13.080	50
Pg 13	8.0	11.0	24	21	10	EX1100.13.110	50
Pg 16	6.0	8.0	24	21	10	EX1100.16.080	50
Pg 16	8.0	11.0	24	21	10	EX1100.16.110	50
Pg 21	9.5	12.5	30	25	12	EX1100.21.125	25
Pg 21	12.5	16.0	30	25	12	EX1100.21.160	25
Pg 29	16.0	19.0	38	28	12	EX1100.29.190	25
Pg 29	19.0	23.0	38	28	12	EX1100.29.230	25
Pg 36	21.5	26.0	50	32	15	EX1100.36.260	10
Pg 36	26.0	30.5	50	32	15	EX1100.36.305	10

可根据要求提供  
不锈钢A2与A4，NPT螺纹

Available on request:  
Executions in steel A2 and A4, entry thread NPT

材质: 黄铜镀镍  
 密封件: TPE  
 O型圈: FPM  
 温度范围: -60°C / +100°C  
 防护等级: IP66 / IP68  
 测试标准: IEC EN 60079-0 / IEC EN 60079-7 / IEC EN 60079-31  
 目录2G: II 2G Ex eb IIC Gb  
 目录2D: II 2D Ex tb IIIC Db  
 区域: 气体 1 和 2 / 粉尘 21 和 22  
 认证: SEV 15 ATEX 0152X  
 IECEx 认证: IECEx SEV 15.0019X

Material: Nickel-plated brass  
 Seal: TPE  
 O-ring: FPM  
 Temperature range: -60°C / +100°C  
 Protection class: IP 66 / IP 68  
 Test standard: IEC EN 60079-0 / IEC EN 60079-7 / IEC EN 60079-31  
 Gas: II 2G Ex eb IIC Gb  
 Dust: II 2D Ex tb IIIC Db  
 Zone: Gas 1 and 2 / dust 21 and 22  
 Certificate: SEV 15 ATEX 0152X  
 IECEx Certificate: IECEx SEV 15.0019X



Progress MS Multi EX



单体密封件 非整体长度绝缘		One-piece sealing insert not overall length insulated						型号   Art. No.		
G	> Ø < min mm	> Ø < max mm			H mm	L mm	i info			
M12x1.5	0.6	1.0	3	15	17	5	3	EX1310.12.3.010	50	
M16x1.5	1.0	1.5	4	18	20	5	3	EX1310.17.4.015	50	
M16x1.5	2.0	3.0	2	18	20	5	-	EX1310.17.2.030	50	
M20x1.5	2.5	3.0	6	24	21	6	-	EX1310.20.6.030	50	
M20x1.5	3.5	5.0	2	24	21	6	-	EX1310.20.2.050	50	
M20x1.5	3.5	5.0	4	24	21	6	-	EX1310.20.4.050	50	
M20x1.5	4.5	6.0	3	24	21	6	-	EX1310.20.3.060	50	
M20x1.5	5.5	7.5	2	24	21	6	-	EX1310.20.2.075	50	
M25x1.5	5.0	6.0	6	30	25	7	-	EX1310.25.6.060	25	
M25x1.5	6.0	7.0	3	30	25	7	-	EX1310.25.3.070	25	
M25x1.5	5.5	7.0	4	30	25	7	-	EX1310.25.4.070	25	
M25x1.5	7.5	9.0	3	30	25	7	-	EX1310.25.3.090	25	
M25x1.5	8.0	10.0	2	30	25	7	-	EX1310.25.2.100	25	
M32x1.5	6.0	7.0	6	36	28	8	-	EX1310.32.6.070	25	
M32x1.5	7.5	9.0	4	36	28	8	-	EX1310.32.4.090	25	
M40x1.5	8.0	9.0	7	46	31	8	3	EX1310.40.7.090	10	
M40x1.5	14.0	15.0	2	46	31	8	3	EX1310.40.2.150	10	
M50x1.5	9.0	10.0	4	55	34	9	3	EX1310.50.4.100	10	
M63x1.5	11.0	12.0	6	70	37	10	3	EX1310.63.6.120	5	
M63x1.5	17.0	18.0	3	70	37	10	3	EX1310.63.3.180	5	

3=NBR密封件  
 可根据要求提供  
 不锈钢A2与A4，NPT螺纹

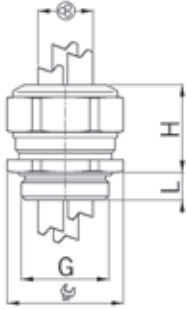
3 = Material sealing insert NBR  
 Available on request:  
 Executions in steel A2 and A4, entry thread NPT



# AGRO Progress® 黄铜镀镍电缆接头，增安型 Ex e II，适用于安装多根电缆

AGRO cable glands Progress® nickel-plated brass increased safety Ex e II for installation of multiple cables

## Pg短螺纹 | Short entry thread Pg



材质: 黄铜镀镍  
 密封件: TPE / NBR  
 O型圈: FPM  
 温度范围: -60°C / +100°C  
 防护等级: IP66 / IP68  
 测试标准: IEC EN 60079-0 / IEC EN 60079-7 / IEC EN 60079-31  
 目录2G: II 2G Ex eb IIC Gb  
 目录2D: II 2D Ex tb IIIC Db  
 区域: 气体 1 和 2 / 粉尘 21 和 22  
 认证: SEV 15 ATEX 0152X  
 IECEx 认证: IECEx SEV 15.0019X

Material: Nickel-plated brass  
 Seal: TPE / NBR  
 O-ring: FPM  
 Temperature range: -60°C / +100°C  
 Protection class: IP 66 / IP 68  
 Test standard: IEC EN 60079-0 / IEC EN 60079-7 / IEC EN 60079-31  
 Gas: II 2G Ex eb IIC Gb  
 Dust: II 2D Ex tb IIIC Db  
 Zone: Gas 1 and 2 / dust 21 and 22  
 Certificate: SEV 15 ATEX 0152X  
 IECEx Certificate: IECEx SEV 15.0019X



### Progress MS Multi EX



单体密封件  
 非整体长度绝缘

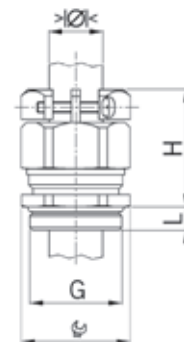
One-piece sealing insert  
 not overall length insulated

G	>Ø< min mm	>Ø< max mm	⊗	⊕ mm	H mm	L mm	i info	型号   Art. No.	⊠
Pg 9	1.0	1.5	4	18	20	6	3	EX1310.09.4.015	50
Pg 9	2.0	3.0	2	18	20	6	-	EX1310.09.2.030	50
Pg 11	2.0	3.0	3	21	21	6	3	EX1310.11.3.030	50
Pg 11	3.0	4.0	2	21	21	6	3	EX1310.11.2.040	50
Pg 11	3.5	5.0	2	21	21	6	-	EX1310.11.2.050	50
Pg 13	2.5	4.0	3	24	23	6	3	EX1310.13.3.040	50
Pg 13	3.5	5.0	2	24	23	6	-	EX1310.13.2.050	50
Pg 16	2.5	3.0	6	24	23	6	-	EX1310.16.6.030	50
Pg 16	3.0	4.0	6	24	23	6	3	EX1310.16.6.040	50
Pg 16	4.5	6.0	2	24	23	6	-	EX1310.16.2.060	50
Pg 16	4.5	6.0	3	24	23	6	-	EX1310.16.3.060	50
Pg 21	5.5	7.0	4	30	28	7	-	EX1310.21.4.070	25
Pg 21	7.5	9.0	3	30	28	7	-	EX1310.21.3.090	25
Pg 29	5.5	6.5	6	38	28	8	3	EX1310.29.6.065	25
Pg 29	8.0	9.0	3	38	28	8	-	EX1310.29.3.090	25
Pg 36	9.0	10.0	4	50	32	8	3	EX1310.36.4.100	10
Pg 36	14.0	15.0	2	50	32	8	3	EX1310.36.2.150	10
Pg 48	11.0	12.0	6	65	37	11	3	EX1310.48.6.120	10
Pg 48	17.0	18.0	3	65	37	11	3	EX1310.48.3.180	10

3=NBR密封件  
 可根据要求提供  
 不锈钢A2与A4，NPT螺纹

3 = Material sealing insert NBR  
 Available on request:  
 Executions in steel A2 and A4, entry thread NPT

材质:	黄铜镀镍	Material:	Nickel-plated brass
密封件:	不锈钢A2	Screws:	Stainless steel A2
O型圈:	TPE	Seal:	TPE
温度范围:	FPM	O-ring:	FPM
防护等级:	-60°C / +100°C	Temperature range:	-60°C / +100°C
防护等级:	IP66 / IP68 (不超过 10 bar)	Protection class:	IP 66 / IP 68 (up to 10 bar)
目录2G:	IEC EN 60079-0 / IEC EN 60079-7 / IEC EN 60079-31	Test standard:	IEC EN 60079-0 / IEC EN 60079-7 / IEC EN 60079-31
目录2D:	II 2G Ex eb IIC Gb	Gas:	II 2G Ex eb IIC Gb
区域:	II 2D Ex tb IIIC Db	Dust:	II 2D Ex tb IIIC Db
区域:	气体 1 和 2 / 粉尘 21 和 22	Zone:	Gas 1 and 2 / dust 21 and 22
IECEX 认证:	SEV 15 ATEX 0151	Certificate:	SEV 15 ATEX 0151
IECEX 认证:	IECEX SEV 15.0018	IECEX Certificate:	IECEX SEV 15.0018



### Progress MS KB EX



单体密封件 非整体长度绝缘							One-piece sealing insert not overall length insulated		
G	> Ø < min mm	> Ø < max mm	mm	H mm	L mm	i info	型号   Art. No.		
M12x1.5	5.0	6.5	15/16	26	5	2	EX1803.12.03.065	50	
M12x1.5	6.5	8.0	15/16	26	5	2	EX1803.12.03.080	50	

2=认证 PTB 02 ATEX 1126X / IECEx SEV 12.0002X      2 = Certificate SEV 15 ATEX 0152X / IECEx SEV 15.0019X

可根据要求提供以下系列带卡箍电缆接头，增安型 Ex e II      The following cable glands with clamps Ex e II are available on request:

黄铜镀镍长螺纹电缆接头      - Cable glands nickel-plated brass with long entry thread  
长螺纹不锈钢A2电缆接头      - Cable glands stainless steel A2 or A4



### Progress MS KB EX



两件套密封件 非整体长度绝缘							Two-piece sealing insert not overall length insulated			
G	> Ø < min mm	> Ø < max mm	> Ø < min mm	> Ø < max mm	mm	H mm	L mm	i info	型号   Art. No.	
M16x1.5	6.0	8.0	8.0	10.5	18/19	30	5	-	EX1803.17	50
M20x1.5	8.0	11.0	11.0	15.0	24	31	6	-	EX1803.20	50
M25x1.5	12.5	16.0	16.0	20.5	30	35	7	-	EX1803.25	25
M32x1.5	17.0	21.0	21.0	25.5	36	40	8	-	EX1803.32	25
M40x1.5	24.0	28.5	28.5	33.0	46	44	8	-	EX1803.40	10
M50x1.5	33.0	37.0	37.0	42.0	55	49	9	-	EX1803.50	10
M63x1.5	40.0	46.0	46.0	52.0	70	55	10	-	EX1803.63	5

可根据要求提供以下系列带卡箍电缆接头，增安型 Ex e II      The following cable glands with clamps Ex e II are available on request:

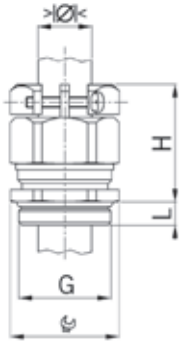
黄铜镀镍长螺纹电缆接头      - Cable glands nickel-plated brass with long entry thread  
长螺纹不锈钢A2电缆接头      - Cable glands stainless steel A2 or A4



# AGRO Progress® 黄铜镀镍带卡箍电缆接头，增安型 Ex e II

## AGRO cable glands Progress® nickel-plated brass with clamps increased safety Ex e II

### Pg短螺纹 | Short entry thread Pg



材质:	黄铜镀镍	Material:	Nickel-plated brass
密封件:	不锈钢A2	Screws:	Stainless steel A2
O型圈:	TPE	Seal:	TPE
温度范围:	FPM	O-ring:	FPM
防护等级:	-60°C / +100°C	Temperature range:	-60°C / +100°C
防护等级:	IP66 / IP68 (不超过10 bar)	Protection class:	IP 66 / IP 68 (up to 10 bar)
目录2G:	IEC EN 60079-0 / IEC EN 60079-7 / IEC EN 60079-31	Test standard:	IEC EN 60079-0 / IEC EN 60079-7 / IEC EN 60079-31
目录2D:	II 2G Ex eb IIC Gb	Gas:	II 2G Ex eb IIC Gb
区域:	II 2D Ex tb IIIC Db	Dust:	II 2D Ex tb IIIC Db
区域:	气体 1 和 2 / 粉尘 21 和 22	Zone:	Gas 1 and 2 / dust 21 and 22
IECEX 认证:	SEV 15 ATEX 0151	Certificate:	SEV 15 ATEX 0151
IECEX 认证:	IECEX SEV 15.0018	IECEX Certificate:	IECEX SEV 15.0018



### Progress MS KB EX



单体密封件  
非整体长度绝缘

One-piece sealing insert  
not overall length insulated

G	> Ø < min mm	> Ø < max mm	mm	H mm	L mm	i info	型号   Art. No.	数量
Pg 7	5.0	6.5	15/16	26	6	2	EX1803.07.03.065	50
Pg 7	6.5	8.0	15/16	26	6	2	EX1803.07.03.080	50

2=认证 PTB 02 ATEX 1126X / IECEx SEV 12.0002X

2 = Certificate SEV 15 ATEX 0152X / IECEx SEV 15.0019X

可根据要求提供以下系列带卡箍电缆接头，增安型Ex e II

The following cable glands with clamps Ex e II are available on request:

黄铜镀镍长螺纹电缆接头

- Cable glands nickel-plated brass with long entry thread

长螺纹不锈钢A2电缆接头

- Cable glands stainless steel A2 or A4

### Progress MS KB EX



两件套密封件  
非整体长度绝缘

Two-piece sealing insert  
not overall length insulated

G	> Ø < min mm	> Ø < max mm	> Ø < min mm	> Ø < max mm	mm	H mm	L mm	i info	型号   Art. No.	数量
Pg 9	6.0	8.0	8.0	10.5	18/19	30	6	-	EX1803.09	50
Pg 11	5.5	8.5	8.5	12.0	21	31	6	-	EX1803.11	50
Pg 13	8.0	11.0	11.0	15.0	24	31	6	-	EX1803.13	50
Pg 16	8.0	11.0	11.0	15.0	24	31	6	-	EX1803.16	50
Pg 21	12.5	16.0	16.0	20.5	30	35	7.5	-	EX1803.21	25
Pg 29	19.0	23.0	23.0	27.5	38	40	8	-	EX1803.29	25
Pg 36	26.0	30.5	30.5	35.0	50	47	8	-	EX1803.36	10
Pg 42	33.0	37.0	37.0	42.0	55	49	10	-	EX1803.42	10
Pg 48	37.0	43.0	43.0	49.0	65	51	11	-	EX1803.48	5

可根据要求提供以下系列带卡箍电缆接头，增安型Ex e II

The following cable glands with clamps Ex e II are available on request:

黄铜镀镍长螺纹电缆接头

- Cable glands nickel-plated brass with long entry thread

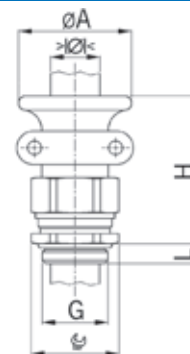
长螺纹不锈钢A2电缆接头

- Cable glands stainless steel A2 or A4



### 公制短螺纹 | Short entry thread metric

材质:	黄铜镀镍	Material:	Nickel-plated brass
密封件:	不锈钢A2	Screws:	Stainless steel A2
O型圈:	TPE	Seal:	TPE
温度范围:	FPM	O-ring:	FPM
防护等级:	-60°C / +100°C	Temperature range:	-60°C / +100°C
防护等级:	IP66 / IP68 (不超过 10 bar)	Protection class:	IP 66 / IP 68 (up to 10 bar)
目录2G:	IEC EN 60079-0 / IEC EN 60079-7 / IEC EN 60079-31	Test standard:	IEC EN 60079-0 / IEC EN 60079-7 / IEC EN 60079-31
目录2D:	II 2G Ex eb IIC Gb	Gas:	II 2G Ex eb IIC Gb
区域:	II 2D Ex tb IIIC Db	Dust:	II 2D Ex tb IIIC Db
区域:	气体 1 和 2 / 粉尘 21 和 22	Zone:	Gas 1 and 2 / dust 21 and 22
IECEX 认证:	SEV 15 ATEX 0151	Certificate:	SEV 15 ATEX 0151
IECEX 认证:	IECEX SEV 15.0018	IECEX Certificate:	IECEX SEV 15.0018



### Progress MS T+KB EX



两件套密封件 非整体长度绝缘		Two-piece sealing insert not overall length insulated											
G	>Ø< min mm	>Ø< max mm	>Ø< min mm	>Ø< max mm	mm	ØA mm	H mm	L mm	型号   Art. No.		📦		
M16x1.5	6.0	8.0	8.0	10.5	18	28	43	5	EX1801.17		50		
M20x1.5	8.0	11.0	11.0	15.0	24	34	46	6	EX1801.20		50		
M25x1.5	12.5	16.0	16.0	20.5	30	44	52	7	EX1801.25		25		
M32x1.5	17.0	21.0	21.0	25.5	36	50	59	8	EX1801.32		10		
M40x1.5	24.0	28.5	28.5	33.0	46	57	59	8	EX1801.40		5		



### 公制长螺纹 | Long entry thread metric

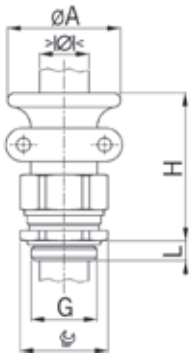
### Progress MS T+KB EX



两件套密封件 非整体长度绝缘		Two-piece sealing insert not overall length insulated											
G	>Ø< min mm	>Ø< max mm	>Ø< min mm	>Ø< max mm	mm	ØA mm	H mm	L mm	型号   Art. No.		📦		
M16x1.5	6.0	8.0	8.0	10.5	18	28	43	10	EX1811.17		50		
M20x1.5	8.0	11.0	11.0	15.0	24	34	46	10	EX1811.20		50		
M25x1.5	12.5	16.0	16.0	20.5	30	44	52	11	EX1811.25		25		
M32x1.5	17.0	21.5	21.5	25.5	36	50	59	13	EX1811.32		10		
M40x1.5	24.0	28.5	28.5	33.0	46	57	59	13	EX1811.40		5		



Pg短螺纹 | Short entry thread Pg



材质:	黄铜镀镍	Material:	Nickel-plated brass
螺钉:	不锈钢A2	Screws:	Stainless steel A2
密封件:	TPE	Seal:	TPE
O型圈:	FPM	O-ring:	FPM
温度范围:	-60°C / +100°C	Temperature range:	-60°C / +100°C
防护等级:	IP66 / IP68 (不超过10 bar)	Protection class:	IP 66 / IP 68 (up to 10 bar)
测试标准:	IEC EN 60079-0 / IEC EN 60079-7 / IEC EN 60079-31	Test standard:	IEC EN 60079-0 / IEC EN 60079-7 / IEC EN 60079-31
目录2G:	II 2G Ex eb IIC Gb	Gas:	II 2G Ex eb IIC Gb
目录2D:	II 2D Ex tb IIIC Db	Dust:	II 2D Ex tb IIIC Db
区域:	气体 1 和 2 / 粉尘 21 和 22	Zone:	Gas 1 and 2 / dust 21 and 22
认证:	SEV 15 ATEX 0151	Certificate:	SEV 15 ATEX 0151
IECEx 认证:	IECEx SEV 15.0018	IECEx Certificate:	IECEx SEV 15.0018



Progress MS T+KB EX



两件套密封件 非整体长度绝缘		Two-piece sealing insert not overall length insulated							型号   Art. No.	📦
G	> Ø < min mm	> Ø < max mm	> Ø < min mm	> Ø < max mm	🌀 mm	ØA mm	H mm	L mm		
Pg 9	6.0	8.0	8.0	10.5	18	28	43	6	EX1801.09	50
Pg 11	5.5	8.5	8.5	12.0	21	30	43	6	EX1801.11	50
Pg 13	8.0	11.0	11.0	15.0	24	34	46	6	EX1801.13	50
Pg 16	8.0	11.0	11.0	15.0	24	34	46	6	EX1801.16	50
Pg 21	12.5	16.0	16.0	20.5	30	44	52	7.5	EX1801.21	25
Pg 29	19.0	23.0	23.0	27.5	38	50	59	8	EX1801.29	10

Pg长螺纹 | Long entry thread Pg



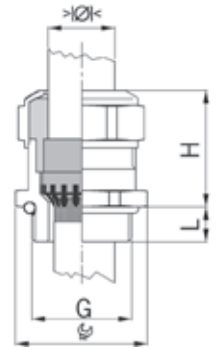
Progress MS T+KB EX



两件套密封件 非整体长度绝缘		Two-piece sealing insert not overall length insulated							型号   Art. No.	📦
G	> Ø < min mm	> Ø < max mm	> Ø < min mm	> Ø < max mm	🌀 mm	ØA mm	H mm	L mm		
Pg 9	6.0	8.0	8.0	10.5	18	28	43	10	EX1811.09	50
Pg 11	5.5	8.5	8.5	12.0	21	30	43	10	EX1811.11	50
Pg 13	8.0	11.0	11.0	15.0	24	34	46	10	EX1811.13	50
Pg 16	8.0	11.0	11.0	15.0	24	34	46	10	EX1811.16	50
Pg 21	12.5	16.0	16.0	20.5	30	44	52	12	EX1811.21	25
Pg 29	19.0	23.0	23.0	27.5	38	50	59	12	EX1811.29	10

公制短螺纹 | Short entry thread metric

材质:	黄铜镀镍	Material:	Nickel-plated brass
密封件:	TPE	Seal:	TPE
O型圈:	FPM	O-ring:	FPM
温度范围:	-60°C / +100°C	Temperature range:	-60°C / +100°C
防护等级:	IP66 / IP68 (不超过 10 bar)	Protection class:	IP 66 / IP 68 (up to 10 bar)
测试标准:	IEC EN 60079-0 / IEC EN 60079-7 / IEC EN 60079-31	Test standard:	IEC EN 60079-0 / IEC EN 60079-7 / IEC EN 60079-31
目录2G:	II 2G Ex eb IIC Gb	Gas:	II 2G Ex eb IIC Gb
目录2D:	II 2D Ex tb IIIC Db	Dust:	II 2D Ex tb IIIC Db
区域:	气体 1 和 2 / 粉尘 21 和 22	Zone:	Gas 1 and 2 / dust 21 and 22
认证:	SEV 15 ATEX 0151	Certificate:	SEV 15 ATEX 0151
IECEX 认证:	IECEX SEV 15.0018	IECEX Certificate:	IECEX SEV 15.0018
性能:	适用于完全剥头或者部分剥头的屏蔽电缆	Properties:	For a quick installation of partially dismantled cables as well as thoroughly shielded cables



Progress MS EMC Rapid EX



单体密封件 非整体长度绝缘		One-piece sealing insert not overall length insulated					型号   Art. No.	📦
G	> Ø < min mm	> Ø < max mm	mm	H mm	L mm			
M12x1.5	4.5	6.0	15	20	5	EX1081.12.060	50	
M12x1.5	6.0	7.5	15	20	5	EX1081.12.075	50	
M16x1.5	6.0	8.0	18	23	5	EX1081.17.080	50	
M16x1.5	8.0	10.0	18	25	5	EX1081.17.100	50	
M20x1.5	8.0	11.0	24	25	6	EX1081.20.110	50	
M20x1.5	11.0	14.0	24	27	6	EX1081.20.140	50	
M25x1.5	13.0	16.0	30	30	7	EX1081.25.160	25	
M25x1.5	17.0	19.0	30	33	7	EX1081.25.190	25	
M32x1.5	18.0	21.0	36	32	8	EX1081.32.210	25	

可根据要求提供长螺纹 Long entry thread available on request



Pg短螺纹 | Short entry thread Pg

Progress MS EMC Rapid EX



单体密封件 非整体长度绝缘		One-piece sealing insert not overall length insulated					型号   Art. No.	📦
G	> Ø < min mm	> Ø < max mm	mm	H mm	L mm			
Pg 7	4.5	6.0	15	20	6	EX1081.07.060	50	
Pg 7	6.0	7.5	15	20	6	EX1081.07.075	50	
Pg 9	6.0	8.0	18	23	6	EX1081.09.080	50	
Pg 9	8.0	10.0	18	25	6	EX1081.09.100	50	
Pg 11	5.5	8.5	21	25	6	EX1081.11.085	50	
Pg 11	8.5	12.0	21	25	6	EX1081.11.120	50	
Pg 13	8.0	11.0	24	25	6	EX1081.13.110	50	
Pg 13	12.5	14.0	24	27	6	EX1081.13.140	50	
Pg 16	8.0	11.0	24	24	6	EX1081.16.110	50	
Pg 16	12.5	14.0	24	27	6	EX1081.16.140	50	
Pg 21	13.0	16.0	30	30	7	EX1081.21.160	25	
Pg 21	17.0	19.0	30	33	7	EX1081.21.190	25	
Pg 29	19.0	23.0	38	33	8	EX1081.29.230	25	
Pg 29	23.0	25.5	38	32	8	EX1081.29.255	25	

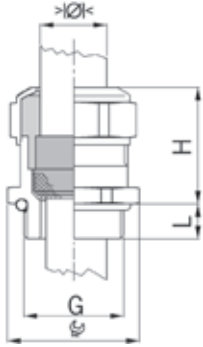
可根据要求提供长螺纹 Long entry thread available on request



# AGRO Progress® EMC黄铜镀镍带接触套电缆接头，增安型 Ex e II

## AGRO EMC cable glands Progress® nickel-plated brass with contact sleeve increased safety Ex e II

### 公制短螺纹 | Short entry thread metric



材质:	黄铜镀镍	Material:	Nickel-plated brass
密封件:	TPE	Seal:	TPE
O型圈:	FPM	O-ring:	FPM
温度范围:	-60°C / +100°C	Temperature range:	-60°C / +100°C
防护等级:	IP66 / IP68 (不超过10 bar)	Protection class:	IP 66 / IP 68 (up to 10 bar)
测试标准:	IEC EN 60079-0 / IEC EN 60079-7 / IEC EN 60079-31	Test standard:	IEC EN 60079-0 / IEC EN 60079-7 / IEC EN 60079-31
目录2G:	II 2G Ex eb IIC Gb	Gas:	II 2G Ex eb IIC Gb
目录2D:	II 2D Ex tb IIIC Db	Dust:	II 2D Ex tb IIIC Db
区域:	气体 1 和 2 / 粉尘 21 和 22	Zone:	Gas 1 and 2 / dust 21 and 22
认证:	SEV 15 ATEX 0152X	Certificate:	SEV 15 ATEX 0152X
IECEX 认证:	IECEX SEV 15.0019X	IECEX Certificate:	IECEX SEV 15.0019X
性能:	运用接触套使屏蔽编织层 与之连接在拧紧的电缆接 头内，达到最佳的屏蔽接 触效果	Properties:	Excellent shield contact through the contact sleeve with the braided shield terminating in the screwed cable gland

### Progress MS EMC EX



单体密封件

非整体长度绝缘

One-piece sealing insert  
not overall length insulated

G	>Ø< min mm	>Ø< max mm	mm	H mm	L mm	i info	型号   Art. No.	📦
M8x1.25	2.5	3.5	11	15	5	1	EX1080.08.035	50
M8x1.25	3.0	4.0	11	15	5	1	EX1080.08.040	50
M10x1.5	3.0	4.0	13	16	5	1	EX1080.10.040	50
M10x1.5	4.0	6.0	13	16	5	1	EX1080.10.060	50
M12x1.5	4.5	6.0	15	20	5	-	EX1080.12.060	50
M12x1.5	6.0	7.5	15	20	5	-	EX1080.12.075	50
M16x1.5	6.0	8.0	18	23	5	-	EX1080.17.080	50
M16x1.5	8.0	10.0	18	25	5	-	EX1080.17.100	50
M20x1.5	8.0	11.0	24	25	6	-	EX1080.20.110	50
M20x1.5	12.5	14.0	24	27	6	-	EX1080.20.140	50
M25x1.5	13.0	16.0	30	30	7	-	EX1080.25.160	25
M25x1.5	17.0	19.0	30	33	7	-	EX1080.25.190	25
M32x1.5	17.0	21.0	36	32	8	-	EX1080.32.210	25
M40x1.5	24.0	28.5	46	34	8	-	EX1080.40.285	10

1=公制粗螺距螺纹

1 = Metric coarse-pitch thread (with VDE test report)

可根据要求提供长螺纹

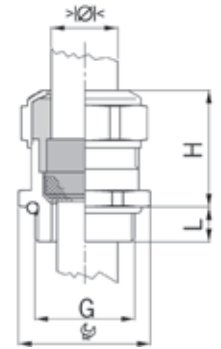
Long entry thread available on request

# AGRO Progress® EMC 黄铜镀镍带接触套电缆接头，增安型 Ex e II

## AGRO EMC cable glands Progress® nickel-plated brass with contact sleeve increased safety Ex e II

Pg短螺纹 | Short entry thread Pg

材质:	黄铜镀镍	Material:	Nickel-plated brass
密封件:	TPE	Seal:	TPE
O型圈:	FPM	O-ring:	FPM
温度范围:	-60°C / +100°C	Temperature range:	-60°C / +100°C
防护等级:	IP66 / IP68 (不超过 10 bar)	Protection class:	IP 66 / IP 68 (up to 10 bar)
测试标准:	IEC EN 60079-0 / IEC EN 60079-7 / IEC EN 60079-31	Test standard:	IEC EN 60079-0 / IEC EN 60079-7 / IEC EN 60079-31
目录2G:	II 2G Ex eb IIC Gb	Gas:	II 2G Ex eb IIC Gb
目录2D:	II 2D Ex tb IIIC Db	Dust:	II 2D Ex tb IIIC Db
区域:	气体 1 和 2 / 粉尘 21 和 22	Zone:	Gas 1 and 2 / dust 21 and 22
认证:	SEV 15 ATEX 0152X	Certificate:	SEV 15 ATEX 0152X
IECEX 认证:	IECEX SEV 15.0019X	IECEX Certificate:	IECEX SEV 15.0019X
性能:	运用接触套使屏蔽编织层 与之连接在拧紧的电缆接 头内，达到最佳的屏蔽接 触效果	Properties:	Excellent shield contact through the contact sleeve with the braided shield terminating in the screwed cable gland



### Progress MS EMC EX

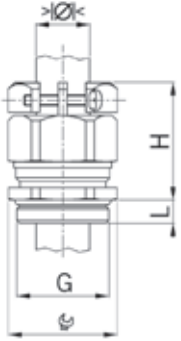


单体密封件 非整体长度绝缘						One-piece sealing insert not overall length insulated	
G	>Ø< min mm	>Ø< max mm	Ø mm	H mm	L mm	型号   Art. No.	
Pg 7	4.5	6.0	15	20	6	EX1080.07.060	50
Pg 7	6.0	7.5	15	20	6	EX1080.07.075	50
Pg 9	6.0	8.0	18	23	6	EX1080.09.080	50
Pg 9	8.0	10.0	18	25	6	EX1080.09.100	50
Pg 11	5.5	8.5	21	23	6	EX1080.11.085	50
Pg 11	9.5	12.0	21	23	6	EX1080.11.120	50
Pg 13	8.0	11.0	24	25	6	EX1080.13.110	50
Pg 13	12.5	14.0	24	27	6	EX1080.13.140	50
Pg 16	8.0	11.0	24	24	6	EX1080.16.110	50
Pg 16	12.5	14.0	24	27	6	EX1080.16.140	50
Pg 21	13.0	16.0	30	30	7.5	EX1080.21.160	25
Pg 21	17.0	19.0	30	33	7.5	EX1080.21.190	25
Pg 29	19.0	23.0	38	33	8	EX1080.29.230	25
Pg 29	24.0	25.5	38	32	8	EX1080.29.255	25
Pg 36	25.0	30.5	50	36	8	EX1080.36.305	10

可根据要求提供长螺纹 Long entry thread available on request



公制短螺纹 | Short entry thread metric



材质:	黄铜镀镍	Material:	Nickel-plated brass
螺钉:	不锈钢A2	Screws:	Stainless steel A2
密封件:	TPE	Seal:	TPE
O型圈:	FPM	O-ring:	FPM
温度范围:	-60°C / +100°C	Temperature range:	-60°C / +100°C
防护等级:	IP66 / IP68 (不超过10 bar)	Protection class:	IP 66 / IP 68 (up to 10 bar)
测试标准:	IEC EN 60079-0 / IEC EN 60079-7 / IEC EN 60079-31	Test standard:	IEC EN 60079-0 / IEC EN 60079-7 / IEC EN 60079-31
目录2G:	II 2G Ex eb IIC Gb	Gas:	II 2G Ex eb IIC Gb
目录2D:	II 2D Ex tb IIIC Db	Dust:	II 2D Ex tb IIIC Db
区域:	气体 1 和 2 / 粉尘 21 和 22	Zone:	Gas 1 and 2 / dust 21 and 22
认证:	SEV 15 ATEX 0151	Certificate:	SEV 15 ATEX 0151
IECEX 认证:	IECEX SEV 15.0018	IECEX Certificate:	IECEX SEV 15.0018



Progress MS EMC KB EX

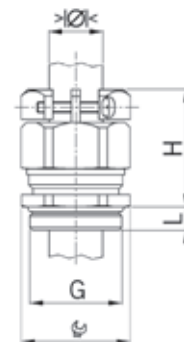


单体密封件 非整体长度绝缘							One-piece sealing insert not overall length insulated	
G	> Ø < min mm	> Ø < max mm	mm	H mm	L mm	i info	型号   Art. No.	
M12x1.5	4.5	6.0	15/16	26	5	1	EX1803.80.12.060	50
M12x1.5	6.0	7.5	15/16	26	5	1	EX1803.80.12.075	50
M16x1.5	6.0	8.0	18/19	30	5	-	EX1803.80.17.080	50
M16x1.5	8.0	10.0	18/19	30	5	-	EX1803.80.17.100	50
M20x1.5	8.0	11.0	24	31	6	-	EX1803.80.20.110	50
M20x1.5	11.0	14.0	24	31	6	-	EX1803.80.20.140	50
M25x1.5	13.0	16.0	30	35	7	-	EX1803.80.25.160	25
M25x1.5	16.0	19.0	30	35	7	-	EX1803.80.25.190	25
M32x1.5	18.0	21.0	36	40	8	-	EX1803.80.32.210	25
M32x1.5	21.0	25.0	36	40	8	-	EX1803.80.32.250	25
M40x1.5	24.0	28.5	46	44	8	-	EX1803.80.40.285	10
M40x1.5	28.5	32.0	46	44	8	-	EX1803.80.40.320	10
M50x1.5	33.0	37.0	55	49	9	-	EX1803.80.50.370	10
M50x1.5	37.0	41.0	55	49	9	-	EX1803.80.50.410	10
M63x1.5	40.0	46.0	70	55	10	-	EX1803.80.63.460	5
M63x1.5	46.0	50.0	70	55	10	-	EX1803.80.63.500	5

1=认证 SEV 15 ATEX 0152X / IECEx SEV 15.0019X      1 = Certificate SEV 15 ATEX 0152X / IECEx SEV 15.0019X  
 可根据要求提供长螺纹      Long entry thread available on request

Pg短螺纹 | Short entry thread Pg

材质:	黄铜镀镍	Material:	Nickel-plated brass
螺钉:	不锈钢A2	Screws:	Stainless steel A2
密封件:	TPE	Seal:	TPE
O型圈:	FPM	O-ring:	FPM
温度范围:	-60°C / +100°C	Temperature range:	-60°C / +100°C
防护等级:	IP66 / IP68 (不超过 10 bar)	Protection class:	IP 66 / IP 68 (up to 10 bar)
测试标准:	IEC EN 60079-0 / IEC EN 60079-7 / IEC EN 60079-31	Test standard:	IEC EN 60079-0 / IEC EN 60079-7 / IEC EN 60079-31
目录2G:	II 2G Ex eb IIC Gb	Gas:	II 2G Ex eb IIC Gb
目录2D:	II 2D Ex tb IIIC Db	Dust:	II 2D Ex tb IIIC Db
区域:	气体 1 和 2 / 粉尘 21 和 22	Zone:	Gas 1 and 2 / dust 21 and 22
认证:	SEV 15 ATEX 0151	Certificate:	SEV 15 ATEX 0151
IECEx 认证:	IECEx SEV 15.0018	IECEx Certificate:	IECEx SEV 15.0018



Progress MS EMC KB EX



单体密封件  
非整体长度绝缘

One-piece sealing insert  
not overall length insulated

G	>Ø< min mm	>Ø< max mm	mm	H mm	L mm	i info	型号   Art. No.	包装
Pg 7	4.5	6.0	15/16	26	6	1	EX1803.80.07.060	50
Pg 7	6.0	7.5	15/16	26	6	1	EX1803.80.07.075	50
Pg 9	6.0	8.0	18/19	30	6	-	EX1803.80.09.080	50
Pg 9	8.0	10.0	18/19	30	6	-	EX1803.80.09.100	50
Pg 11	5.5	8.5	21	31	6	-	EX1803.80.11.085	50
Pg 11	8.5	12.0	21	31	6	-	EX1803.80.11.120	50
Pg 13	8.0	11.0	24	31	6	-	EX1803.80.13.110	50
Pg 13	11.0	14.0	24	31	6	-	EX1803.80.13.140	50
Pg 16	8.0	11.0	24	31	6	-	EX1803.80.16.110	50
Pg 16	11.0	14.0	24	31	6	-	EX1803.80.16.140	50
Pg 21	13.0	16.0	30	35	7.5	-	EX1803.80.21.160	25
Pg 21	16.0	19.0	30	35	7.5	-	EX1803.80.21.190	25
Pg 29	19.0	23.0	38	40	8	-	EX1803.80.29.230	25
Pg 29	23.0	25.5	38	40	8	-	EX1803.80.29.255	25
Pg 36	25.0	30.5	50	47	8	-	EX1803.80.36.305	10
Pg 36	30.5	35.0	50	47	8	-	EX1803.80.36.350	10
Pg 42	33.0	37.0	55	49	10	-	EX1803.80.42.370	10
Pg 42	37.0	41.0	55	49	10	-	EX1803.80.42.410	10
Pg 48	39.0	43.0	65	51	11	-	EX1803.80.48.430	5
Pg 48	43.0	46.5	65	51	11	-	EX1803.80.48.465	5

1=认证 SEV 15 ATEX 0152X / IECEx SEV 15.0019X

1 = Certificate SEV 15 ATEX 0152X / IECEx SEV 15.0019X

可根据要求提供长螺纹

Long entry thread available on request

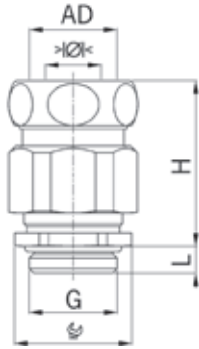


1  
2  
3  
4  
5  
6  
7  
8  
9  
10  
11  
12

# AGRO Progress® 黄铜镀镍组合软管接头，增安型 Ex e II

## AGRO combination conduit glands Progress® nickel-plated brass increased safety Ex e II

### 公制短螺纹 | Short entry thread metric



材质: 黄铜镀镍  
 密封件: TPE  
 O型圈: FPM  
 温度范围: -60°C / +100°C  
 防护等级: IP66 / IP68  
 测试标准: IEC EN 60079-0 / IEC EN 60079-7 / IEC EN 60079-31  
 目录2G: II 2G Ex eb IIC Gb  
 目录2D: II 2D Ex tb IIIC Db  
 区域: 气体 1 和 2 / 粉尘 21 和 22  
 认证: SEV 15 ATEX 0152X  
 IECEx 认证: IECEx SEV 15.0019X

Material: Nickel-plated brass  
 Seal: TPE  
 O-ring: FPM  
 Temperature range: -60°C / +100°C  
 Protection class: IP 66 / IP 68  
 Test standard: IEC EN 60079-0 / IEC EN 60079-7 / IEC EN 60079-31  
 Gas: II 2G Ex eb IIC Gb  
 Dust: II 2D Ex tb IIIC Db  
 Zone: Gas 1 and 2 / dust 21 and 22  
 Certificate: SEV 15 ATEX 0152X  
 IECEx Certificate: IECEx SEV 15.0019X

### Progress MS Kombi EX



单体密封件  
 非整体长度绝缘

One-piece sealing insert  
 not overall length insulated

G	AD mm	> Ø < min mm	> Ø < max mm	Ø mm	H mm	L mm	型号   Art. No.	包装
M12x1.5	10	4.0	6.5	15/17	33	5	EX1700.12.10.065	50
M16x1.5	14	4.5	6.0	18/21	38	5	EX1700.17.14.060	50
M16x1.5	14	6.0	8.0	18/21	38	5	EX1700.17.14.080	50
M16x1.5	14	8.5	10.5	18/21	38	5	EX1700.17.14.105	50
M20x1.5	17	6.5	8.0	24/25	38	6	EX1700.20.17.080	25
M20x1.5	17	9.5	11.0	24/25	38	6	EX1700.20.17.110	25
M20x1.5	19	6.5	8.0	24/27	39	6	EX1700.20.19.080	25
M20x1.5	19	9.5	11.0	24/27	39	6	EX1700.20.19.110	25
M20x1.5	19	12.0	15.0	24/27	39	6	EX1700.20.19.150	25
M20x1.5	21	6.5	8.0	24/29	39	6	EX1700.20.21.080	25
M20x1.5	21	9.5	11.0	24/29	39	6	EX1700.20.21.110	25
M20x1.5	21	12.0	15.0	24/29	39	6	EX1700.20.21.150	25
M25x1.5	21	10.5	12.5	30/29	43	7	EX1700.25.21.125	25
M25x1.5	21	13.0	16.0	30/29	43	7	EX1700.25.21.160	25
M25x1.5	27	10.5	12.5	30/36	50	7	EX1700.25.27.125	25
M25x1.5	27	13.0	16.0	30/36	50	7	EX1700.25.27.160	25
M25x1.5	27	17.0	20.5	30/36	50	7	EX1700.25.27.205	25
M32x1.5	27	19.0	21.0	36/36	52	8	EX1700.32.27.210	25
M40x1.5	36	25.0	28.5	45/45	56	8	EX1700.40.36.285	10
M50x1.5	45	35.0	37.0	55/54	60	9	EX1700.50.45.370	10
M63x1.5	56	44.0	46.0	70/66	67	10	EX1700.63.56.460	5

可根据要求提供长螺纹

Long entry thread available on request

根据软管类型，固定套须单独订购

Depending on the type of conduit, the stabilising bush must be ordered separately.

警告：只能使用金属软管或带金属编织网的软管！

Warning: Only metallic conduits or conduits with metallic braiding may be applied!



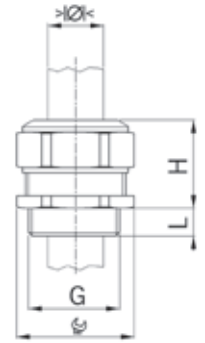
# AGRO Progress® GFK 尼龙电缆接头，增安型 Ex e II

## AGRO synthetic cable glands Progress® GFK increased safety Ex e II

公制螺纹 | Entry thread metric

材质: 玻璃纤维增强聚酰胺  
 密封件: 无卤素  
 O型圈: TPE / NBR  
 温度范围: -20°C / +85°C  
 防护等级: IP66 / IP68  
 测试标准: IEC EN 60079-0 / IEC EN 60079-7 / IEC EN 60079-31  
 目录2G: II 2G Ex eb IIC Gb  
 目录2D: II 2D Ex tb IIIC Db  
 区域: 气体 1 和 2 / 粉尘 21 和 22  
 认证: SEV 15 ATEX 0152X  
 IECEx 认证: IECEx SEV 15.0019X

Material: Polyamide glass fiber reinforced  
 Properties: halogen-free  
 Seal: TPE / NBR  
 Temperature range: -20°C / +85°C  
 Protection class: IP 66 / IP 68  
 Test standard: IEC EN 60079-0 / IEC EN 60079-7 / IEC EN 60079-31  
 Gas: II 2G Ex eb IIC Gb  
 Dust: II 2D Ex tb IIIC Db  
 Zone: Gas 1 and 2 / dust 21 and 22  
 Certificate: SEV 15 ATEX 0152X  
 IECEx Certificate: IECEx SEV 15.0019X



### Progress GFK EX



浅灰色RAL7035 Light grey RAL 7035  
 单体密封件 One-piece sealing insert

G	> Ø < min mm	> Ø < max mm	mm	H mm	L mm	i info	型号   Art. No.	
M16x1.5	4.5	6.0	21	26	12	-	EX1571.17.060	50
M16x1.5	6.0	8.0	21	26	12	-	EX1571.17.080	50
M20x1.5	6.0	8.0	27	28	13	-	EX1571.20.080	50
M20x1.5	8.0	11.0	27	28	13	-	EX1571.20.110	50
M25x1.5	9.5	12.5	34	33	13	-	EX1571.25.125	25
M25x1.5	12.5	16.0	34	33	13	-	EX1571.25.160	25
M25x1.5	16.0	19.0	34	33	13	-	EX1571.25.190	25
M25x1.5	19.0	20.5	34	33	13	-	EX1571.25.205	25
M32x1.5	20.0	21.0	41	35	15	-	EX1571.32.210	25
M32x1.5	21.0	22.0	41	35	15	3	EX1571.32.220	25
M32x1.5	22.0	23.0	41	35	15	3	EX1571.32.230	25
M32x1.5	23.0	25.5	41	35	15	-	EX1571.32.255	25
M40x1.5	25.5	27.0	50	40	15	3	EX1571.40.270	10
M40x1.5	27.0	28.5	50	40	15	-	EX1571.40.285	10
M40x1.5	28.5	30.0	50	40	15	3	EX1571.40.300	10
M40x1.5	30.0	33.0	50	40	15	-	EX1571.40.330	10
M50x1.5	33.0	35.0	60	42	16	3	EX1571.50.350	10
M50x1.5	35.0	37.0	60	42	16	-	EX1571.50.370	10
M50x1.5	37.0	39.0	60	42	16	3	EX1571.50.390	10
M50x1.5	39.0	42.0	60	42	16	-	EX1571.50.420	10
M63x1.5	42.0	44.0	75	48	16	3	EX1571.63.440	5
M63x1.5	44.0	46.0	75	48	16	-	EX1571.63.460	5
M63x1.5	46.0	48.0	75	48	16	3	EX1571.63.480	5
M63x1.5	48.0	52.0	75	48	16	-	EX1571.63.520	5



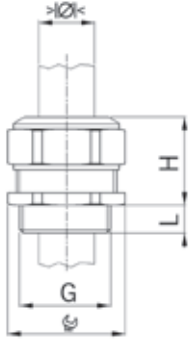
3=NBR密封件

3 = Material sealing insert NBR

# AGRO Progress® GFK 尼龙电缆接头，增安型 Ex e II

## AGRO synthetic cable glands Progress® GFK increased safety Ex e II

### 公制螺纹 | Entry thread metric



材质: 玻璃纤维增强聚酰胺  
 性能: 无卤素  
 密封件: TPE / NBR  
 温度范围: -20°C / +85°C  
 防护等级: IP66 / IP68  
 测试标准: IEC EN 60079-0 / IEC EN 60079-7 / IEC EN 60079-31  
 目录2G: II 2G Ex eb IIC Gb  
 目录2D: II 2D Ex tb IIIC Db  
 区域: 气体 1 和 2 / 粉尘 21 和 22  
 认证: SEV 15 ATEX 0152X  
 IECEx 认证: IECEx SEV 15.0019X

Material: Polyamide glass fiber reinforced  
 Properties: halogen-free  
 Seal: TPE / NBR  
 Temperature range: -20°C / +85°C  
 Protection class: IP 66 / IP 68  
 Test standard: IEC EN 60079-0 / IEC EN 60079-7 / IEC EN 60079-31  
 Gas: II 2G Ex eb IIC Gb  
 Dust: II 2D Ex tb IIIC Db  
 Zone: Gas 1 and 2 / dust 21 and 22  
 Certificate: SEV 15 ATEX 0152X  
 IECEx Certificate: IECEx SEV 15.0019X

### Progress GFK EX



黑色RAL9005  
单体密封件

Black RAL 9005  
One-piece sealing insert

G	> Ø < min mm	> Ø < max mm	mm	H mm	L mm	i info	型号   Art. No.	包装
M16x1.5	4.5	6.0	21	26	12	-	EX1540.17.060	50
M16x1.5	6.0	8.0	21	26	12	-	EX1540.17.080	50
M20x1.5	6.0	8.0	27	28	13	-	EX1540.20.080	50
M20x1.5	8.0	11.0	27	28	13	-	EX1540.20.110	50
M25x1.5	9.5	12.5	34	33	13	-	EX1540.25.125	25
M25x1.5	12.5	16.0	34	33	13	-	EX1540.25.160	25
M25x1.5	16.0	19.0	34	33	13	-	EX1540.25.190	25
M25x1.5	19.0	20.5	34	33	13	-	EX1540.25.205	25
M32x1.5	20.0	21.0	41	35	15	-	EX1540.32.210	25
M32x1.5	21.0	22.0	41	35	15	3	EX1540.32.220	25
M32x1.5	22.0	23.0	41	35	15	3	EX1540.32.230	25
M32x1.5	23.0	25.5	41	35	15	-	EX1540.32.255	25
M40x1.5	25.5	27.0	50	40	15	3	EX1540.40.270	10
M40x1.5	27.0	28.5	50	40	15	-	EX1540.40.285	10
M40x1.5	28.5	30.0	50	40	15	3	EX1540.40.300	10
M40x1.5	30.0	33.0	50	40	15	-	EX1540.40.330	10
M50x1.5	33.0	35.0	60	42	16	3	EX1540.50.350	10
M50x1.5	35.0	37.0	60	42	16	-	EX1540.50.370	10
M50x1.5	37.0	39.0	60	42	16	3	EX1540.50.390	10
M50x1.5	39.0	42.0	60	42	16	-	EX1540.50.420	10
M63x1.5	42.0	44.0	75	48	16	3	EX1540.63.440	5
M63x1.5	44.0	46.0	75	48	16	-	EX1540.63.460	5
M63x1.5	46.0	48.0	75	48	16	3	EX1540.63.480	5
M63x1.5	48.0	52.0	75	48	16	-	EX1540.63.520	5

3=NBR密封件

3 = Material sealing insert NBR

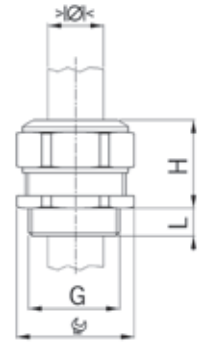
# AGRO Progress® GFK 尼龙电缆接头，增安型 Ex e II

## AGRO synthetic cable glands Progress® GFK increased safety Ex e II

Pg 螺纹 | Entry thread Pg

材质: 玻璃纤维增强聚酰胺  
 性能: 无卤素  
 密封件: TPE / NBR  
 温度范围: -20°C / +85°C  
 防护等级: IP66 / IP68  
 测试标准: IEC EN 60079-0 / IEC EN 60079-7 / IEC EN 60079-31  
 目录2G: II 2G Ex eb IIC Gb  
 目录2D: II 2D Ex tb IIIC Db  
 区域: 气体 1 和 2 / 粉尘 21 和 22  
 认证: SEV 15 ATEX 0152X  
 IECEx 认证: IECEx SEV 15.0019X

Material: Polyamide glass fiber reinforced  
 Properties: halogen-free  
 Seal: TPE / NBR  
 Temperature range: -20°C / +85°C  
 Protection class: IP 66 / IP 68  
 Test standard: IEC EN 60079-0 / IEC EN 60079-7 / IEC EN 60079-31  
 Gas: II 2G Ex eb IIC Gb  
 Dust: II 2D Ex tb IIIC Db  
 Zone: Gas 1 and 2 / dust 21 and 22  
 Certificate: SEV 15 ATEX 0152X  
 IECEx Certificate: IECEx SEV 15.0019X



### Progress GFK EX



浅灰色RAL7035 Light grey RAL 7035  
 单体密封件 One-piece sealing insert

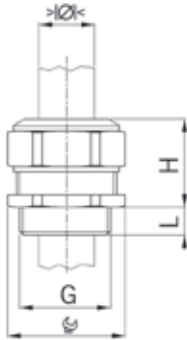
G	>Ø< min mm	>Ø< max mm	Ø mm	H mm	L mm	i info	型号   Art. No.	
Pg 9	4.5	6.0	21	26	12	-	EX1571.09.060	50
Pg 9	6.0	8.0	21	26	12	-	EX1571.09.080	50
Pg 11	4.0	5.5	24	28	12	-	EX1571.11.055	50
Pg 11	5.5	8.5	24	28	12	-	EX1571.11.085	50
Pg 13	6.0	8.0	27	28	13	-	EX1571.13.080	50
Pg 13	8.0	11.0	27	28	13	-	EX1571.13.110	50
Pg 16	6.0	8.0	27	28	13	-	EX1571.16.080	50
Pg 16	8.0	11.0	27	28	13	-	EX1571.16.110	50
Pg 21	9.5	12.5	34	33	13	-	EX1571.21.125	25
Pg 21	12.5	16.0	34	33	13	-	EX1571.21.160	25
Pg 21	16.0	19.0	34	33	13	-	EX1571.21.190	25
Pg 21	19.0	20.5	34	33	13	-	EX1571.21.205	25
Pg 29	19.5	21.0	41	36	13	3	EX1571.29.210	25
Pg 29	21.0	23.0	41	36	13	-	EX1571.29.230	25
Pg 29	23.0	25.0	41	36	13	3	EX1571.29.250	25
Pg 29	25.0	27.5	41	36	13	-	EX1571.29.275	25
Pg 36	27.0	28.5	55	42	16	3	EX1571.36.285	10
Pg 36	28.5	30.5	55	42	16	-	EX1571.36.305	10
Pg 36	30.5	32.5	55	42	16	3	EX1571.36.325	10
Pg 36	32.5	35.0	55	42	16	-	EX1571.36.350	10
Pg 42	33.0	35.0	60	42	16	3	EX1571.42.350	10
Pg 42	35.0	37.0	60	42	16	-	EX1571.42.370	10
Pg 42	37.0	39.0	60	42	16	3	EX1571.42.390	10
Pg 42	39.0	42.0	60	42	16	-	EX1571.42.420	10
Pg 48	41.0	43.0	70	46	16	-	EX1571.48.430	5
Pg 48	43.0	45.0	70	46	16	3	EX1571.48.450	5
Pg 48	45.0	47.0	70	46	16	3	EX1571.48.470	25
Pg 48	47.0	49.0	70	46	16	-	EX1571.48.490	5

3=NBR密封件

3 = Material sealing insert NBR



### Pg 螺纹 | Entry thread Pg



**材质:** 玻璃纤维增强聚酰胺  
**性能:** 无卤素  
**密封件:** TPE / NBR  
**温度范围:** -20°C / +85°C  
**防护等级:** IP66 / IP68  
**测试标准:** IEC EN 60079-0 / IEC EN 60079-7 / IEC EN 60079-31  
**目录2G:** II 2G Ex eb IIC Gb  
**目录2D:** II 2D Ex tb IIIC Db  
**区域:** 气体 1 和 2 / 粉尘 21 和 22  
**认证:** SEV 15 ATEX 0152X  
**IECEX 认证:** IECEX SEV 15.0019X

**Material:** Polyamide glass fiber reinforced  
**Properties:** halogen-free  
**Seal:** TPE / NBR  
**Temperature range:** -20°C / +85°C  
**Protection class:** IP 66 / IP 68  
**Test standard:** IEC EN 60079-0 / IEC EN 60079-7 / IEC EN 60079-31  
**Gas:** II 2G Ex eb IIC Gb  
**Dust:** II 2D Ex tb IIIC Db  
**Zone:** Gas 1 and 2 / dust 21 and 22  
**Certificate:** SEV 15 ATEX 0152X  
**IECEX Certificate:** IECEX SEV 15.0019X

### Progress GFK EX



黑色RAL9005  
单体密封件

Black RAL 9005  
One-piece sealing insert

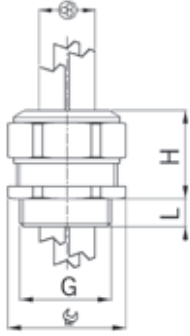
G	>Ø< min mm	>Ø< max mm	Ø mm	H mm	L mm	i info	型号   Art. No.	包装
Pg 9	4.5	6.0	21	26	12	-	EX1540.09.060	50
Pg 9	6.0	8.0	21	26	12	-	EX1540.09.080	50
Pg 11	4.0	5.5	24	28	12	-	EX1540.11.055	50
Pg 11	5.5	8.5	24	28	12	-	EX1540.11.085	50
Pg 13	6.0	8.0	27	28	13	-	EX1540.13.080	50
Pg 13	8.0	11.0	27	28	13	-	EX1540.13.110	50
Pg 16	6.0	8.0	27	28	13	-	EX1540.16.080	50
Pg 16	8.0	11.0	27	28	13	-	EX1540.16.110	50
Pg 21	9.5	12.5	34	33	13	-	EX1540.21.125	25
Pg 21	12.5	16.0	34	33	13	-	EX1540.21.160	25
Pg 21	16.0	19.0	34	33	13	-	EX1540.21.190	25
Pg 21	19.0	20.5	34	33	13	-	EX1540.21.205	25
Pg 29	19.5	21.0	41	36	13	3	EX1540.29.210	25
Pg 29	21.0	23.0	41	36	13	-	EX1540.29.230	25
Pg 29	23.0	25.0	41	36	13	3	EX1540.29.250	25
Pg 29	25.0	27.5	41	36	13	-	EX1540.29.275	25
Pg 36	27.0	28.5	55	42	16	3	EX1540.36.285	10
Pg 36	28.5	30.5	55	42	16	-	EX1540.36.305	10
Pg 36	30.5	32.5	55	42	16	3	EX1540.36.325	10
Pg 36	32.5	35.0	55	42	16	-	EX1540.36.350	10
Pg 42	33.0	35.0	60	42	16	3	EX1540.42.350	10
Pg 42	35.0	37.0	60	42	16	-	EX1540.42.370	10
Pg 42	37.0	39.0	60	42	16	3	EX1540.42.390	10
Pg 42	39.0	42.0	60	42	16	-	EX1540.42.420	10
Pg 48	41.0	43.0	70	46	16	-	EX1540.48.430	5
Pg 48	43.0	45.0	70	46	16	3	EX1540.48.450	5
Pg 48	45.0	47.0	70	46	16	3	EX1540.48.470	5
Pg 48	47.0	49.0	70	46	16	-	EX1540.48.490	5

3=NBR密封件

3 = Material sealing insert NBR



Pg 螺纹 | Entry thread Pg



材质: 玻璃纤维增强聚酰胺  
 性能: 无卤素  
 密封件: TPE / NBR  
 温度范围: -20°C / +85°C  
 防护等级: IP66 / IP68  
 测试标准: IEC EN 60079-0 / IEC EN 60079-7 / IEC EN 60079-31  
 目录2G: II 2G Ex eb IIC Gb  
 目录2D: II 2D Ex tb IIIC Db  
 区域: 气体 1 和 2 / 粉尘 21 和 22  
 认证: SEV 15 ATEX 0152X  
 IECEx 认证: IECEx SEV 15.0019X

Material: Polyamide glass fiber reinforced  
 Properties: halogen-free  
 Seal: TPE / NBR  
 Temperature range: -20°C / +85°C  
 Protection class: IP 66 / IP 68  
 Test standard: IEC EN 60079-0 / IEC EN 60079-7 / IEC EN 60079-31  
 Gas: II 2G Ex eb IIC Gb  
 Dust: II 2D Ex tb IIIC Db  
 Zone: Gas 1 and 2 / dust 21 and 22  
 Certificate: SEV 15 ATEX 0152X  
 IECEx Certificate: IECEx SEV 15.0019X

Progress GFK Multi EX



浅灰色RAL7035  
 单体密封件

Light grey RAL 7035  
 One-piece sealing insert

G	$\gt;\varnothing<$ min mm	$\gt;\varnothing<$ max mm			H mm	L mm	i info	型号   Art. No.	
Pg 9	1.0	1.5	4	21	26	12	3	EX1571.09.4.015	50
Pg 9	2.0	3.0	2	21	26	12	-	EX1571.09.2.030	50
Pg 11	3.5	5.0	2	24	28	12	-	EX1571.11.2.050	50
Pg 11	2.0	3.0	3	24	28	12	3	EX1571.11.3.030	50
Pg 13	2.5	4.0	3	27	28	13	3	EX1571.13.3.040	50
Pg 13	3.5	5.0	2	27	28	13	-	EX1571.13.2.050	50
Pg 16	2.5	3.0	6	27	28	13	-	EX1571.16.6.030	50
Pg 16	4.5	6.0	3	27	28	13	-	EX1571.16.3.060	50
Pg 21	5.5	7.0	4	34	33	13	-	EX1571.21.4.070	25
Pg 21	7.5	9.0	3	34	33	13	-	EX1571.21.3.090	25
Pg 29	5.5	6.5	6	41	36	13	3	EX1571.29.6.065	25
Pg 29	8.0	9.0	3	41	36	13	3	EX1571.29.3.090	25
Pg 36	9.0	10.0	4	55	42	16	3	EX1571.36.4.100	10
Pg 36	14.0	15.0	2	55	42	16	3	EX1571.36.2.150	10
Pg 42	9.0	10.0	4	60	42	16	3	EX1571.42.4.100	10
Pg 48	11.0	12.0	6	70	46	16	3	EX1571.48.6.120	5
Pg 48	17.0	18.0	3	70	46	16	3	EX1571.48.3.180	5

3=NBR密封件

3 = Material sealing insert NBR

Progress GFK Multi EX



黑色RAL9005  
 单体密封件

Black RAL 9005  
 One-piece sealing insert

G	$\gt;\varnothing<$ min mm	$\gt;\varnothing<$ max mm			H mm	L mm	i info	型号   Art. No.	
Pg 9	1.0	1.5	4	21	26	12	3	EX1540.09.4.015	50
Pg 9	2.0	3.0	2	21	26	12	-	EX1540.09.2.030	50
Pg 11	2.0	3.0	3	24	28	12	3	EX1540.11.3.030	50
Pg 11	3.5	5.0	2	24	28	12	-	EX1540.11.2.050	50
Pg 13	2.5	4.0	3	27	28	13	3	EX1540.13.3.040	50
Pg 13	3.5	5.0	2	27	28	13	-	EX1540.13.2.050	50
Pg 16	2.5	3.0	6	27	28	13	-	EX1540.16.6.030	50
Pg 16	4.5	6.0	3	27	28	13	-	EX1540.16.3.060	50
Pg 21	5.5	7.0	4	34	33	13	-	EX1540.21.4.070	25
Pg 21	7.5	9.0	3	34	33	13	-	EX1540.21.3.090	25
Pg 29	5.5	6.5	6	41	36	13	3	EX1540.29.6.065	25
Pg 29	8.0	9.0	3	41	36	13	3	EX1540.29.3.090	25
Pg 36	14.0	15.0	2	55	42	16	3	EX1540.36.2.150	10
Pg 36	9.0	10.0	4	55	42	16	3	EX1540.36.4.100	10
Pg 42	9.0	10.0	4	60	42	16	3	EX1540.42.4.100	10
Pg 48	11.0	12.0	6	70	46	16	3	EX1540.48.6.120	5
Pg 48	17.0	18.0	3	70	46	16	3	EX1540.48.3.180	5

3=NBR密封件

3 = Material sealing insert NBR

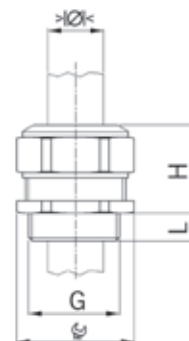
# AGRO Progress® GFK 尼龙电缆接头，增安型 Ex e II 和本安型 Ex i II

## AGRO synthetic cable glands Progress® GFK increased safety Ex e II and intrinsic safety Ex i II

公制螺纹 | Entry thread metric

材质: 玻璃纤维增强聚酰胺  
 性能: 无卤素  
 密封件: TPE / NBR  
 温度范围: -20°C / +85°C  
 防护等级: IP68  
 测试标准: IEC EN 60079-0 / IEC EN 60079-7 / IEC EN 60079-31  
 目录2G: II 2G Ex eb IIC Gb  
 目录2D: II 2D Ex tb IIIC Db  
 和本安型 气体: II 2G Ex ia IIC Ga  
 和本安型 粉尘: II 2D Ex ia IIIC Da  
 区域: 气体 0, 1 和 2 / 粉尘 20, 21 和 22  
 认证: SEV 15 ATEX 0152X  
 IECEx 认证: IECEx SEV 15.0019X

Material: Polyamide glass fiber reinforced  
 Properties: halogen-free  
 Seal: TPE / NBR  
 Temperature range: -20°C / +85°C  
 Protection class: IP 66 / IP 68 (up to 10 bar)  
 Test standard: IEC EN 60079-0 / IEC EN 60079-7 / IEC EN 60079-31  
 Gas: II 2G Ex eb IIC Gb  
 Dust: II 2D Ex tb IIIC Db  
 Intrinsic safety gas: II 2G Ex ia IIC Ga  
 Intrinsic safety dust: II 2D Ex ia IIIC Da  
 Zone: Gas 0, 1 and 2 / dust 20, 21 and 22  
 Certificate: SEV 15 ATEX 0152X  
 IECEx Certificate: IECEx SEV 15.0019X



### Progress GFK EX



黑色 / 浅蓝色 RAL 5012  
 单体密封件

Black / light blue RAL 5012  
 One-piece sealing insert

G	> Ø < min mm	> Ø < max mm	mm	H mm	L mm	i info	型号   Art. No.	
M16x1.5	4.5	6.0	21	26	12	-	EX1530.17.060	50
M16x1.5	6.0	8.0	21	26	12	-	EX1530.17.080	50
M20x1.5	6.0	8.0	27	28	13	-	EX1530.20.080	50
M20x1.5	8.0	11.0	27	28	13	-	EX1530.20.110	50
M25x1.5	9.5	12.5	34	33	13	-	EX1530.25.125	25
M25x1.5	12.5	16.0	34	33	13	-	EX1530.25.160	25
M25x1.5	16.0	19.0	34	33	13	-	EX1530.25.190	25
M25x1.5	19.0	20.5	34	33	13	-	EX1530.25.205	25
M32x1.5	20.0	21.0	41	35	15	-	EX1530.32.210	25
M32x1.5	21.0	22.0	41	35	15	3	EX1530.32.220	25
M32x1.5	22.0	23.0	41	35	15	3	EX1530.32.230	25
M32x1.5	23.0	25.5	41	35	15	-	EX1530.32.255	25
M40x1.5	25.5	27.0	50	40	15	3	EX1530.40.270	10
M40x1.5	27.0	28.5	50	40	15	-	EX1530.40.285	10
M40x1.5	28.5	30.0	50	40	15	3	EX1530.40.300	10
M40x1.5	30.0	33.0	50	40	15	-	EX1530.40.330	10
M50x1.5	33.0	35.0	60	42	16	3	EX1530.50.350	10
M50x1.5	35.0	37.0	60	42	16	-	EX1530.50.370	10
M50x1.5	37.0	39.0	60	42	16	3	EX1530.50.390	10
M50x1.5	39.0	42.0	60	42	16	-	EX1530.50.420	10
M63x1.5	42.0	44.0	75	48	16	3	EX1530.63.440	5
M63x1.5	44.0	46.0	75	48	16	-	EX1530.63.460	5
M63x1.5	46.0	48.0	75	48	16	3	EX1530.63.480	5
M63x1.5	48.0	52.0	75	48	16	-	EX1530.63.520	5



3=NBR密封件

3 = Material sealing insert NBR

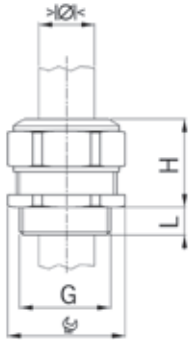
可根据要求提供

Available on request:

用于安装多根电缆

For installation of multiple cables

Pg 螺纹 | Entry thread Pg



材质: 玻璃纤维增强聚酰胺  
 性能: 无卤素  
 密封件: TPE / NBR  
 温度范围: -20°C / +85°C  
 防护等级: IP68  
 测试标准: IEC EN 60079-0 / IEC EN 60079-7 / IEC EN 60079-31  
 目录2G: II 2G Ex eb IIC Gb  
 目录2D: II 2D Ex tb IIIC Db  
 和本安型 气体: II 2G Ex ia IIC Ga  
 和本安型 粉尘: II 2D Ex ia IIIC Da  
 区域: 气体 0, 1 和 2 / 粉尘 20, 21 和 22  
 认证: SEV 15 ATEX 0152X  
 IECEx 认证: IECEx SEV 15.0019X

Material: Polyamide glass fiber reinforced  
 Properties: halogen-free  
 Seal: TPE / NBR  
 Temperature range: -20°C / +85°C  
 Protection class: IP 68  
 Test standard: IEC EN 60079-0 / IEC EN 60079-7 / IEC EN 60079-31  
 Gas: II 2G Ex eb IIC Gb  
 Dust: II 2D Ex tb IIIC Db  
 Intrinsic safety gas: II 2G Ex ia IIC Ga  
 Intrinsic safety dust: II 2D Ex ia IIIC Da  
 Zone: Gas 0, 1 and 2 / dust 20, 21 and 22  
 Certificate: SEV 15 ATEX 0152X  
 IECEx Certificate: IECEx SEV 15.0019X

Progress GFK EX



黑色 / 浅蓝色 RAL 5012  
 单体密封件

Black / light blue RAL 5012  
 One-piece sealing insert

G	>Ø< min mm	>Ø< max mm	mm	H mm	L mm	i info	型号   Art. No.	📦
Pg 9	4.5	6.0	21	26	12	-	EX1530.09.060	50
Pg 9	6.0	8.0	21	26	12	-	EX1530.09.080	50
Pg 11	4.0	5.5	24	28	12	-	EX1530.11.055	50
Pg 11	5.5	8.5	24	28	12	-	EX1530.11.085	50
Pg 13	6.0	8.0	27	28	13	-	EX1530.13.080	50
Pg 13	8.0	11.0	27	28	13	-	EX1530.13.110	50
Pg 16	6.0	8.0	27	28	13	-	EX1530.16.080	50
Pg 16	8.0	11.0	27	28	13	-	EX1530.16.110	50
Pg 21	9.5	12.5	34	33	13	-	EX1530.21.125	25
Pg 21	12.5	16.0	34	33	13	-	EX1530.21.160	25
Pg 21	16.0	19.0	34	33	13	-	EX1530.21.190	25
Pg 21	19.0	20.5	34	33	13	-	EX1530.21.205	25
Pg 29	19.5	21.0	41	36	13	3	EX1530.29.210	25
Pg 29	21.0	23.0	41	36	13	-	EX1530.29.230	25
Pg 29	23.0	25.0	41	36	13	3	EX1530.29.250	25
Pg 29	25.0	27.5	41	36	13	-	EX1530.29.275	25
Pg 36	27.0	28.5	55	42	16	3	EX1530.36.285	10
Pg 36	28.5	30.5	55	42	16	-	EX1530.36.305	10
Pg 36	30.5	32.5	55	42	16	3	EX1530.36.325	10
Pg 36	32.5	35.0	55	42	16	-	EX1530.36.350	10
Pg 42	33.0	35.0	60	42	16	3	EX1530.42.350	10
Pg 42	35.0	37.0	60	42	16	-	EX1530.42.370	10
Pg 42	37.0	39.0	60	42	16	3	EX1530.42.390	10
Pg 42	39.0	42.0	60	42	16	-	EX1530.42.420	10
Pg 48	41.0	43.0	70	46	16	-	EX1530.48.430	5
Pg 48	43.0	45.0	70	46	16	3	EX1530.48.450	5
Pg 48	45.0	47.0	70	46	16	3	EX1530.48.470	5
Pg 48	47.0	49.0	70	46	16	-	EX1530.48.490	5

3=NBR密封件

3 = Material sealing insert NBR

可根据要求提供

Available on request:

用于安装多根电缆

For installation of multiple cables



带过滤膜的的压力平衡通风防水口，增安型 Ex e II Pressure balance element with membrane increased safety Ex e II

材质:	黄铜镀镍	Material:	Nickel-plated brass
过滤膜:	PES (聚苯醚砜)	Membrane:	PES polyethersulfone
O型圈:	FPM	O-ring:	FPM
温度范围:	-60°C / +100°C	Temperature range:	-60°C / +100°C
测试标准:	IEC EN 60079-0 / IEC EN 60079-7 / IEC EN 60079-31	Test standard:	IEC EN 60079-0 / IEC EN 60079-7 / IEC EN 60079-31
目录2G:	II 2G Ex eb IIC Gb	Gas:	II 2G Ex eb IIC Gb
目录2D:	II 2D Ex tb IIIC Db	Dust:	II 2D Ex tb IIIC Db
区域:	气体 1 和 2 / 粉尘 21 和 22	Zone:	Gas 1 and 2 / dust 21 and 22
认证:	SEV 16 ATEX 0143	Certificate:	SEV 16 ATEX 0143
IECEx 认证:	IECEx SEV 16.0010	IECEx Certificate:	IECEx SEV 16.0010



EX DAE

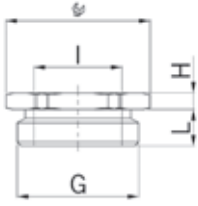


带过滤膜的 带O型圈				with membrane with O-ring	型号   Art. No.	
G	 mm	H mm	L mm			
M12x1.5	18	9.5	8		EX2450.12.34	25
M16x1.5	18	9.5	8		EX2450.17.34	20
M20x1.5	22	10.0	8		EX2450.20.34	20
可根据要求提供 不锈钢A2或A4 Pg 螺纹				Available on request: Stainless steel A2 or A4 Entry thread Pg		



1  
2  
3  
4  
5  
6  
7  
8  
9  
10  
11  
12

### 附件 | Accessories



#### 黄铜镀镍缩减接头，增安型 Ex e II

材质:	黄铜镀镍
O型圈:	FPM
温度范围:	-60°C / +100°C
防护等级:	IP66 / IP68
测试标准:	IEC EN 60079-0 / IEC EN 60079-7 / IEC EN 60079-31
目录2G:	II 2G Ex eb IIC Gb
目录2D:	II 2D Ex tb IIIC Db
区域:	气体 1 和 2 / 粉尘 21 和 22
认证:	SEV 15 ATEX 0151
IECEX 认证:	IECEX SEV 15.0018

#### Reduction fittings nickel-plated brass increased safety Ex e II

Material:	Nickel-plated brass
O-ring:	FPM
Temperature range:	-60°C / +100°C
Protection class:	IP 66 / IP 68
Test standard:	IEC EN 60079-0 / IEC EN 60079-7 / IEC EN 60079-31
Gas:	II 2G Ex eb IIC Gb
Dust:	II 2D Ex tb IIIC Db
Zone:	Gas 1 and 2 / dust 21 and 22
Certificate:	SEV 15 ATEX 0151
IECEX Certificate:	IECEX SEV 15.0018



#### Reduktion MS EX



公制外螺纹  
公制内螺纹  
带O型圈

Outer thread metric  
Inner thread metric  
with O-ring

G	I	i info	mm	H mm	L mm	i info	型号   Art. No.	
M10x1.5	M 8x1.25	1	13	8.0	5	2	EX3500.10.08	50
M12x1.5	M 8x1.25	1	15	3.0	5	2	EX3500.12.08	50
M12x1.5	M10x1.5	1	15	8.0	5	2	EX3500.12.10	50
M16x1.5	M10x1.5	1	18	3.0	5	-	EX3500.17.10	50
M16x1.5	M12x1.5	-	18	3.0	5	-	EX3500.17.12	50
M20x1.5	M12x1.5	-	24	3.0	6	-	EX3500.20.12	50
M20x1.5	M16x1.5	-	24	3.0	6	-	EX3500.20.17	50
M25x1.5	M16x1.5	-	30	3.5	7	-	EX3500.25.17	25
M25x1.5	M20x1.5	-	30	3.5	7	-	EX3500.25.20	25
M32x1.5	M20x1.5	-	36	4.0	8	-	EX3500.32.20	20
M32x1.5	M25x1.5	-	36	4.0	8	-	EX3500.32.25	20
M40x1.5	M25x1.5	-	46	4.5	8	-	EX3500.40.25	10
M40x1.5	M32x1.5	-	46	4.5	8	-	EX3500.40.32	10
M50x1.5	M32x1.5	-	55	5.0	9	-	EX3500.50.32	10
M50x1.5	M40x1.5	-	55	5.0	9	-	EX3500.50.40	10
M63x1.5	M40x1.5	-	70	5.5	10	-	EX3500.63.40	5
M63x1.5	M50x1.5	-	70	5.5	10	-	EX3500.63.50	5

1=公制粗螺距螺纹

1 = Metric coarse-pitch thread (with VDE test report)

2=认证 PTB 02 ATEX 1126X / IECEx SEV 12.0002X

2 = Certificate SEV 15 ATEX 0152X / IECEx SEV 15.0019X

根据标准，不允许将缩减/增扩接头相互连接使用

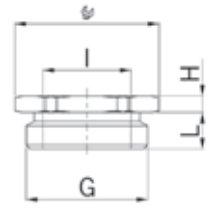
The norm interdicts to screw several reduction/enlarging fittings into each other!

黄铜镀镍缩减接头，增安型 Ex e II

Reduction fittings nickel-plated brass increased safety Ex e II

材质:	黄铜镀镍
O型圈:	FPM
温度范围:	-60°C / +100°C
防护等级:	IP66 / IP68
测试标准:	IEC EN 60079-0 / IEC EN 60079-7 / IEC EN 60079-31
目录2G:	II 2G Ex eb IIC Gb
目录2D:	II 2D Ex tb IIIC Db
区域:	气体 1 和 2 / 粉尘 21 和 22
认证:	SEV 15 ATEX 0151
IECEx 认证:	IECEx SEV 15.0018

Material:	Nickel-plated brass
O-ring:	FPM
Temperature range:	-60°C / +100°C
Protection class:	IP 66 / IP 68
Test standard:	IEC EN 60079-0 / IEC EN 60079-7 / IEC EN 60079-31
Gas:	II 2G Ex eb IIC Gb
Dust:	II 2D Ex tb IIIC Db
Zone:	Gas 1 and 2 / dust 21 and 22
Certificate:	SEV 15 ATEX 0151
IECEx Certificate:	IECEx SEV 15.0018



Reduktion MS EX



公制外螺纹 公制内螺纹 带O型圈							Outer thread metric Inner thread metric with O-ring	
G	I	i info	 mm	H mm	L mm	i info	型号   Art. No.	
Pg 7	M 8x1.25	1	15	3.0	6	2	EX3500.07.08	50
Pg 7	M10x1.5	1	15	7.0	6	2	EX3500.07.10	50
Pg 9	M 8x1.25	1	18	3.0	6	-	EX3500.09.08	50
Pg 9	M10x1.5	1	18	3.0	6	-	EX3500.09.10	50
Pg 9	M12x1.5	-	18	8.0	6	-	EX3500.09.12	50
Pg 11	M 8x1.25	1	21	3.0	6	-	EX3500.11.08	50
Pg 11	M10x1.5	1	21	3.0	6	-	EX3500.11.10	50
Pg 11	M12x1.5	-	21	3.0	6	-	EX3500.11.12	50
Pg 11	M16x1.5	-	21	8.0	6	-	EX3500.11.17	50
Pg 13	M12x1.5	-	24	3.0	6	-	EX3500.13.12	50
Pg 13	M16x1.5	-	24	3.0	6	-	EX3500.13.17	50
Pg 16	M12x1.5	-	24	3.0	6	-	EX3500.16.12	25
Pg 16	M16x1.5	-	24	3.0	6	-	EX3500.16.17	25
Pg 16	M20x1.5	-	24	10.5	6	-	EX3500.16.20	25
Pg 21	M16x1.5	-	30	3.5	7.5	-	EX3500.21.17	25
Pg 21	M20x1.5	-	30	3.5	7.5	-	EX3500.21.20	25
Pg 21	M25x1.5	-	30	10.5	7.5	-	EX3500.21.25	25
Pg 29	M25x1.5	-	38	4.0	8	-	EX3500.29.25	20
Pg 29	M32x1.5	-	38	13.0	8	-	EX3500.29.32	20
Pg 36	M32x1.5	-	50	4.5	8	-	EX3500.36.32	10
Pg 36	M40x1.5	-	50	4.5	8	-	EX3500.36.40	10
Pg 42	M32x1.5	-	55	5.0	10	-	EX3500.42.32	10
Pg 42	M40x1.5	-	55	5.0	10	-	EX3500.42.40	10
Pg 42	M50x1.5	-	55	15.0	10	-	EX3500.42.50	10
Pg 48	M40x1.5	-	65	5.5	11	-	EX3500.48.40	5
Pg 48	M50x1.5	-	65	5.5	11	-	EX3500.48.50	5

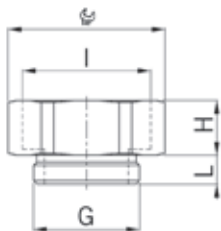


1=公制粗螺距螺纹      1 = Metric coarse-pitch thread (with VDE test report)  
 2=认证 PTB 02 ATEX 1126X / IECEx SEV 12.0002X      2 = Certificate SEV 15 ATEX 0152X / IECEx SEV 15.0019X  
 根据标准，不允许将缩减/增扩接头相互连接使用      The norm interdicts to screw several reduction/enlarging fittings into each other!

### 附件 | Accessories

#### 黄铜镀镍增扩接头，增安型 Ex e II

#### Enlarging fittings nickel-plated brass increased safety Ex e II



材质:	黄铜镀镍
O型圈:	FPM
温度范围:	-60°C / +100°C
防护等级:	IP66 / IP68
测试标准:	IEC EN 60079-0 / IEC EN 60079-7 / IEC EN 60079-31
目录2G:	II 2G Ex eb IIC Gb
目录2D:	II 2D Ex tb IIIC Db
区域:	气体 1 和 2 / 粉尘 21 和 22
认证:	SEV 15 ATEX 0151
IECEX 认证:	IECEX SEV 15.0018

Material:	Nickel-plated brass
O-ring:	FPM
Temperature range:	-60°C / +100°C
Protection class:	IP 66 / IP 68
Test standard:	IEC EN 60079-0 / IEC EN 60079-7 / IEC EN 60079-31
Gas:	II 2G Ex eb IIC Gb
Dust:	II 2D Ex tb IIIC Db
Zone:	Gas 1 and 2 / dust 21 and 22
Certificate:	SEV 15 ATEX 0151
IECEX Certificate:	IECEX SEV 15.0018

#### Erweiterung MS EX



公制外螺纹  
公制内螺纹  
带O型圈

Outer thread metric  
Inner thread metric  
with O-ring

G	I	i info	mm	H mm	L mm	i info	型号   Art. No.	
M 8x1.25	M10x1.5	1	13	9	5	2	EX3600.08.10	50
M10x1.5	M12x1.5	1	15	9	5	2	EX3600.10.12	50
M12x1.5	M16x1.5	-	18	9	5	2	EX3600.12.17	50
M16x1.5	M20x1.5	-	24	10	5	-	EX3600.17.20	50
M20x1.5	M25x1.5	-	30	11.5	6	-	EX3600.20.25	25
M25x1.5	M32x1.5	-	36	14	7	-	EX3600.25.32	25
M32x1.5	M40x1.5	-	46	14	8	-	EX3600.32.40	25
M40x1.5	M50x1.5	-	55	16	8	-	EX3600.40.50	10
M50x1.5	M63x1.5	-	70	17	9	-	EX3600.50.63	10

1=公制粗螺距螺纹

1 = Metric coarse-pitch thread (with VDE test report)

2=认证 PTB 02 ATEX 1126X / IECEx SEV 12.0002X

2 = Certificate SEV 15 ATEX 0152X / IECEx SEV 15.0019X

根据标准，不允许将缩减/增扩接头相互连接使用

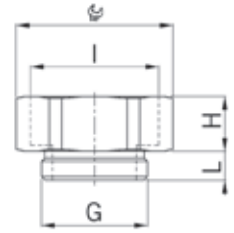
The norm interdicts to screw several reduction/enlarging fittings into each other!

黄铜镀镍增扩接头，增安型 Ex e II

Enlarging fittings nickel-plated brass increased safety Ex e II

材质:	黄铜镀镍
O型圈:	FPM
温度范围:	-60°C / +100°C
防护等级:	IP66 / IP68
测试标准:	IEC EN 60079-0 / IEC EN 60079-7 / IEC EN 60079-31
目录2G:	II 2G Ex eb IIC Gb
目录2D:	II 2D Ex tb IIIC Db
区域:	气体 1 和 2 / 粉尘 21 和 22
认证:	SEV 15 ATEX 0151
IECEx 认证:	IECEx SEV 15.0018

Material:	Nickel-plated brass
O-ring:	FPM
Temperature range:	-60°C / +100°C
Protection class:	IP 66 / IP 68
Test standard:	IEC EN 60079-0 / IEC EN 60079-7 / IEC EN 60079-31
Gas:	II 2G Ex eb IIC Gb
Dust:	II 2D Ex tb IIIC Db
Zone:	Gas 1 and 2 / dust 21 and 22
Certificate:	SEV 15 ATEX 0151
IECEx Certificate:	IECEx SEV 15.0018





Erweiterung MS EX



公制外螺纹  
公制内螺纹  
带O型圈

Outer thread metric  
Inner thread metric  
with O-ring

G	I	 mm	H mm	L mm	i info	型号   Art. No.	
Pg 7	M12x1.5	15	9.0	6	2	EX3600.07.12	50
Pg 7	M16x1.5	18	9.0	6	2	EX3600.07.17	50
Pg 9	M16x1.5	18	9.5	6	-	EX3600.09.17	50
Pg 9	M20x1.5	24	10.5	6	-	EX3600.09.20	50
Pg 11	M20x1.5	24	10.5	6	-	EX3600.11.20	50
Pg 11	M25x1.5	30	11.5	6	-	EX3600.11.25	25
Pg 13	M20x1.5	24	10.5	6	-	EX3600.13.20	50
Pg 13	M25x1.5	30	11.5	6	-	EX3600.13.25	25
Pg 16	M25x1.5	30	11.5	6	-	EX3600.16.25	25
Pg 16	M32x1.5	36	13.5	6	-	EX3600.16.32	25
Pg 21	M32x1.5	36	14.0	7.5	-	EX3600.21.32	25
Pg 21	M40x1.5	46	14.0	7.5	-	EX3600.21.40	20
Pg 29	M40x1.5	46	14.0	8	-	EX3600.29.40	20
Pg 29	M50x1.5	55	16.0	8	-	EX3600.29.50	10
Pg 36	M50x1.5	55	16.0	8	-	EX3600.36.50	10
Pg 36	M63x1.5	70	17.0	8	-	EX3600.36.63	10
Pg 42	M63x1.5	70	17.0	10	-	EX3600.42.63	10
Pg 48	M63x1.5	70	17.0	11	-	EX3600.48.63	10



1=公制粗螺距螺纹

1 = Metric coarse-pitch thread (with VDE test report)

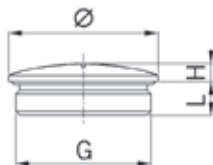
2=认证 PTB 02 ATEX 1126X / IECEx SEV 12.0002X

2 = Certificate SEV 15 ATEX 0152X / IECEx SEV 15.0019X

根据标准，不允许将缩减/增扩接头相互连接使用

The norm interdicts to screw several reduction/enlarging fittings into each other!

### 公制短螺纹 | Short entry thread metric



#### 黄铜镀镍锁紧堵头，增安型 Ex e II

材质:	黄铜镀镍
O型圈:	FPM
温度范围:	-60°C / +100°C
防护等级:	IP66 / IP68
测试标准:	IEC EN 60079-0 / IEC EN 60079-7 / IEC EN 60079-31
目录2G:	II 2G Ex eb IIC Gb
目录2D:	II 2D Ex tb IIIC Db
区域:	气体 1 和 2 / 粉尘 21 和 22
认证:	SEV 15 ATEX 0151
IECEX 认证:	IECEX SEV 15.0018

#### Locking plugs nickel-plated brass increased safety Ex e II

Material:	Nickel-plated brass
O-ring:	FPM
Temperature range:	-60°C / +100°C
Protection class:	IP 66 / IP 68
Test standard:	IEC EN 60079-0 / IEC EN 60079-7 / IEC EN 60079-31
Gas:	II 2G Ex eb IIC Gb
Dust:	II 2D Ex tb IIIC Db
Zone:	Gas 1 and 2 / dust 21 and 22
Certificate:	SEV 15 ATEX 0151
IECEX Certificate:	IECEX SEV 15.0018



#### Locking plug MS EX



带O型圈					with O-ring	型号   Art. No.	☐
G	Ø mm	H mm	L mm	i info			
M8x1.25	10	3	5	1		EX8708.08	50
M10x1.5	12	3	5	1		EX8710.08	50
M12x1.5	14	3	5	-		EX8712.08	50
M16x1.5	19	3	5	-		EX8717.08	50
M20x1.5	24	3	6	-		EX8720.08	25
M25x1.5	28	4	7	-		EX8725.08	25
M32x1.5	35	4	8	-		EX8732.08	10
M40x1.5	45	6	8	-		EX8740.08	10
M50x1.5	55	6	9	-		EX8750.08	10
M63x1.5	70	6	10	-		EX8763.08	10

1=公制粗螺距螺纹

可根据要求提供

长螺纹

不锈钢A2或耐腐蚀不锈钢A4锁紧堵头，公制长螺纹或短螺纹

1 = Metric coarse-pitch thread (with VDE test report)

Available on request:

- Long entry thread

- Locking plugs in stainless steel A2 or acid-proof stainless steel A4 with short or long metric entry thread

### Pg短螺纹 | Short entry thread Pg



#### Locking plug MS EX

带O型圈				with O-ring	型号   Art. No.	☐
G	Ø mm	H mm	L mm			
Pg 7	14	3	5		EX8707.08	50
Pg 9	17	3	6		EX8709.08	50
Pg 11	20	3	6		EX8711.08	50
Pg 13	22	3	6.5		EX8713.08	50
Pg 16	24	3	6.5		EX8716.08	50
Pg 21	30	4	7		EX8721.08	10
Pg 29	39	4	8		EX8729.08	10
Pg 36	50	6	9		EX8736.08	10
Pg 48	65	6	10		EX8748.08	10

可根据要求提供

长螺纹

不锈钢A2或耐腐蚀不锈钢A4锁紧堵头，公制长螺纹或短螺纹

Available on request:

- Long entry thread

- Locking plugs in stainless steel A2 or acid-proof stainless steel A4 with short or long metric entry thread

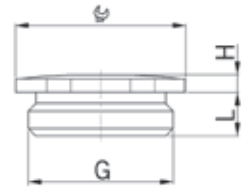
公制螺纹 | Entry thread metric

尼龙锁紧堵头，增安型 Ex e II

Synthetic locking plugs for increased safety Ex e II

材质:	聚酰胺
O型圈:	NBR
温度范围:	-20°C / +90°C
防护等级:	IP68
测试标准:	IEC EN 60079-0 / IEC EN 60079-7 / IEC EN 60079-31
目录2G:	II 2G Ex eb IIC Gb
目录2D:	II 2D Ex tb IIC Db
区域:	气体 1 和 2 / 粉尘 21 和 22
认证:	DMT 03 ATEX E 049
IECEx 认证:	IECEx BVS 07.0021

Material:	Polyamide
O-ring:	NBR
Temperature range:	-20°C / +90°C
Protection class:	IP 68
Test standard:	IEC EN 60079-0 / IEC EN 60079-7 / IEC EN 60079-31
Gas:	II 2G Ex eb IIC Gb
Dust:	II 2D Ex tb IIC Db
Zone:	Gas 1 and 2 / dust 21 and 22
Certificate:	DMT 03 ATEX E 049
IECEx Certificate:	IECEx BVS 07.0021



黑色RAL9005 带O型圈					Black RAL 9005 with O-ring	
G			H	L	型号   Art. No.	
	mm	mm	mm	mm		
M12x1.5	15	6	13.0	8.5	8841.12	100
M16x1.5	19	8	13.0	8.5	8841.17	100
M20x1.5	24	8	14.5	9.0	8841.20	100
M25x1.5	28	8	16.0	10.5	8841.25	100
M32x1.5	36	8	17.5	11.5	8841.32	100
M40x1.5	46	8	18.0	11.5	8841.40	50
M50x1.5	55	8	20.0	13.5	8841.50	25
M63x1.5	70	8	21.0	14.5	8841.63	10



Pg 螺纹 | Entry thread Pg



黑色RAL9005 带O型圈					Black RAL 9005 with O-ring	
G			H	L	型号   Art. No.	
	mm	mm	mm	mm		
Pg 7	15	6	13.0	8.5	8841.07	100
Pg 9	19	8	13.0	8.5	8841.09	100
Pg 11	24	8	14.5	9.0	8841.11	100
Pg 13	24	8	14.5	9.0	8841.13	100
Pg 16	28	8	16.0	10.5	8841.16	100
Pg 21	36	8	17.5	11.5	8841.21	100
Pg 29	46	8	18.0	11.5	8841.29	50
Pg 36	55	8	20.0	13.5	8841.36	25
Pg 42	60	8	20.0	13.5	8841.42	10
Pg 48	70	8	21.0	14.5	8841.48	10

